



Greenwich Peninsula, 8 Pilot Walk, SE10 0FJ

Price:

£ 2,850 /pcm

Greenwich Peninsula, 8 Pilot Walk, SE10 0FJ

Price: £ 2,850 /pcm2 bedroom house

[View Property](#)

OVERVIEW

This beautifully appointed two bedroom apartment offers 780sqft of thoughtfully designed living space, featuring a bright open-plan kitchen and living area and a generous bathroom space.

Elegant interior finishes include oak flooring, muted green Silestone worktops, and sleek porcelain-tiled bathrooms, creating a calm and refined aesthetic throughout.

KEY FEATURES

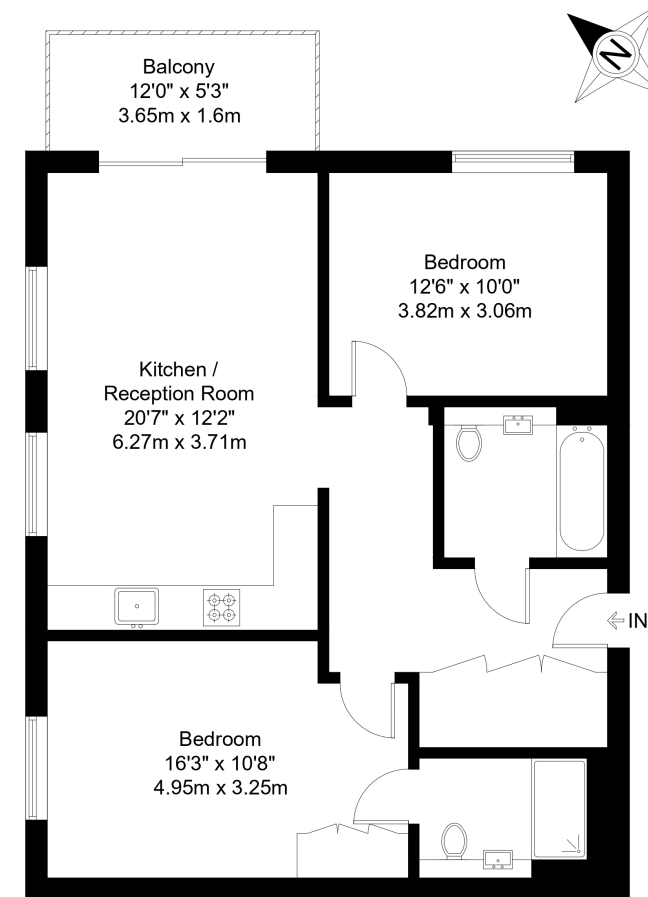
- Two bedroom
- 780sqft
- Furnished
- Private balcony
- Oak flooring and Silestone worktops
- Modern porcelain-tiled bathroom
- 24 hour concierge, gym and co-working
- Landscaped podium gardens
- 0.3 km to North Greenwich Underground Zone 2

Greenwich Peninsula, SE10

Approx Gross Internal Area = 74.3 sq m / 800 sq ft

Balcony = 5.8 sq m / 62 sq ft

Total = 80.1 sq m / 862 sq ft



Second Floor

The Floor plan is not to scale and measurements and areas shown are approximate and therefore should be used for illustrative purposes only. The plan has been prepared in accordance with the RICS code of Measuring Practice and whilst we have confidence in the information produced it must not be relied on. Maximum lengths and widths are represented on the floor plan. If there is any aspect of particular importance, you should carry out or commission your own inspection of the property.

Copyright @ BleuPlan

