



Wilmot Street, Bethnal Green, E2 0BU

Price:
£ 300,000

Wilmot Street, Bethnal Green, E2 0BU

Price: £ 300,000 1 bedroom house

[View Property](#)

OVERVIEW

This chain free terraced conversion comprises a spacious multi-purpose reception to the rear of the building. Large traditional sash windows allowing for an abundance of natural light and calming views of the picturesque Weavers Fields Park behind the property.

The room benefits from original hard wood flooring, exposed brickwork, and space efficient contemporary shelving.

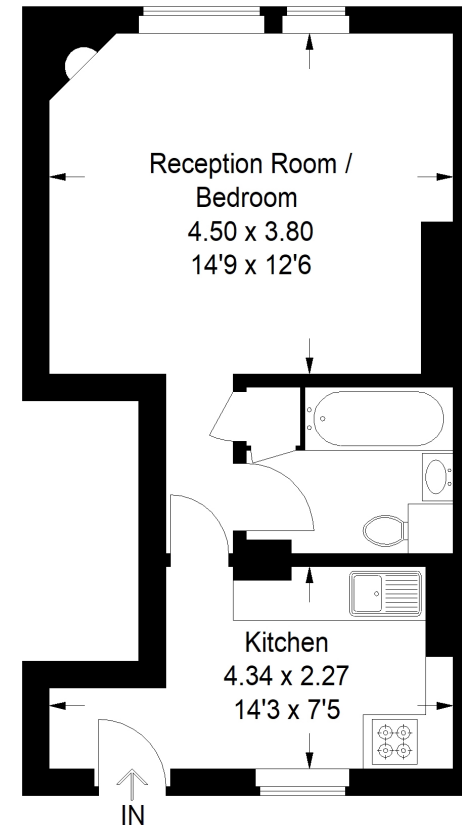
KEY FEATURES

- Studio apartment
- Edwardian purpose-build block
- Separate kitchen
- Stamp duty exempt for first time buyers
- Chain free
- Heat of Bethnal Green
- Sought after location
- Great transport links
- Victoria Park close by
- Fantastic amenities and restaurants close by

Wilmot Street, E2

Approximate Gross Internal Area
32.5 sq m / 350 sq ft

ERNEST-BROOKS
INTERNATIONAL



Upper Ground Floor

Property of Ernest Brooks International

This plan is for layout guidance only. Not drawn to scale unless stated. Windows and door openings are approximate. Whilst every care is taken in the preparation of this plan, please check all dimensions, shapes and compass bearings before making any decisions reliant upon them. (ID946387)

