



**Wheel House, 1 Burrells Wharf Square, E14 3TA**

Price:  
£ 1,900 /pcm





# Wheel House, 1 Burrells Wharf Square, E14 3TA

Price: £ 1,900 /pcm1 bedroom house

[View Property](#)

## OVERVIEW

This generously proportioned property is one of the largest one-bedroom units in the development, offering an abundance of space for both comfortable living and working from home. The large double bedroom benefits from a walk-in wardrobe and a stylish en-suite bathroom, providing a touch of luxury and practicality.

The spacious lounge is perfect for entertaining and features a charming inglenook area, ideal for a dining table and chairs. From the living room, step out onto a private balcony - a peaceful retreat with space for outdoor seating, perfect for enjoying warm evenings surrounded by the tranquil and beautifully maintained grounds of Burrells Wharf.

## KEY FEATURES

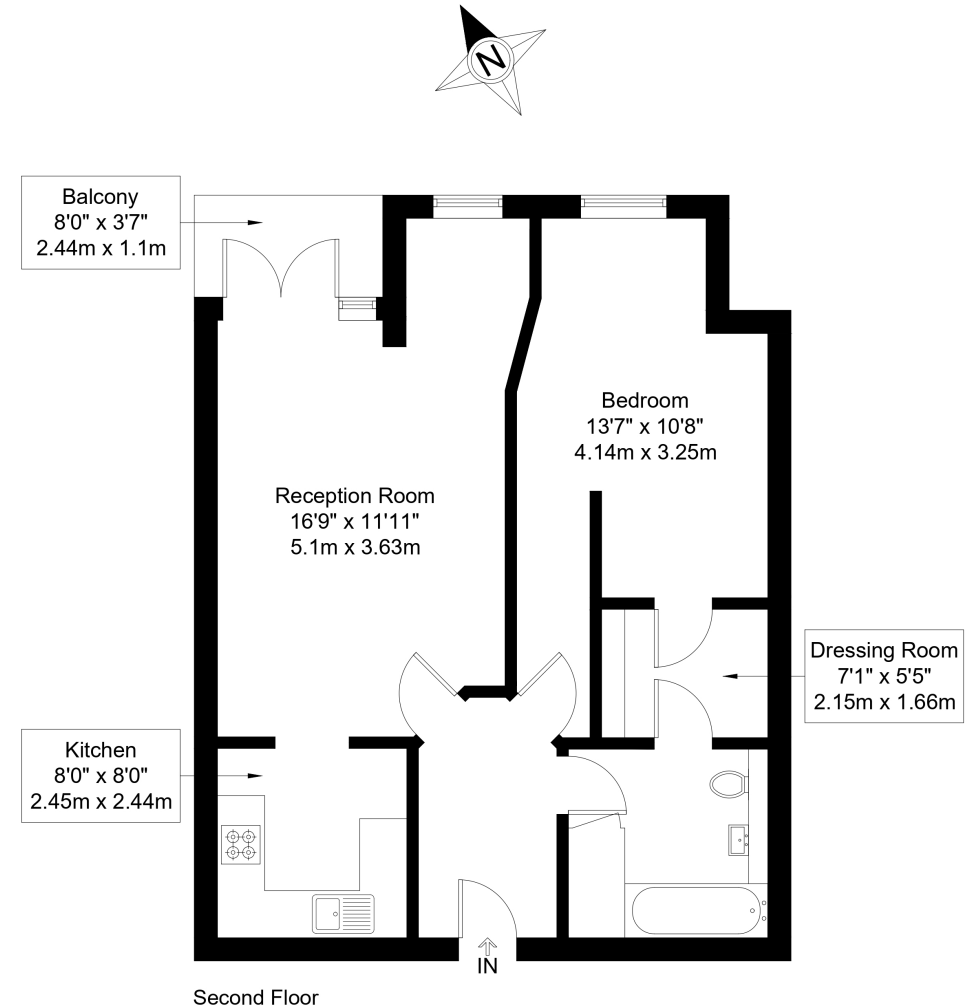
- One bedroom
- One bathroom
- 741stft
- Private balcony
- 24hrs concierge
- Underground parking
- Gym, swimming pool and sauna

# Burrells Wharf Square, E14

Approx Gross Internal Area = 68.8 sq m / 741 sq ft

Balcony = 6.5 sq m / 70 sq ft

Total = 75.3 sq m / 811 sq ft



The Floor plan is not to scale and measurements and areas shown are approximate and therefore should be used for illustrative purposes only. The plan has been prepared in accordance with the RICS code of Measuring Practice and whilst we have confidence in the information produced it must not be relied on. Maximum lengths and widths are represented on the floor plan. If there is any aspect of particular importance, you should carry out or commission your own inspection of the property.  
Copyright © BleuPlan

Energy Performance Certificates



