



Westmark Tower, 1 Newcastle Place, W2 1BW

Price:
£ 7,600 /pcm

Westmark Tower, 1 Newcastle Place, W2 1BW

Price: £ 7,600 /pcm3 bedroom house

[View Property](#)

OVERVIEW

Situated on the 25th floor, this large spectacular three bedroom apartment is in the heart of Westmark Tower - part of the West End Gate.

This property comprises a large bright open plan kitchen and living room leading to a large private balcony with great views, three double bedrooms(two with built-in wardrobes and master with en-suite), a large family sized bathroom and ample storage.

KEY FEATURES

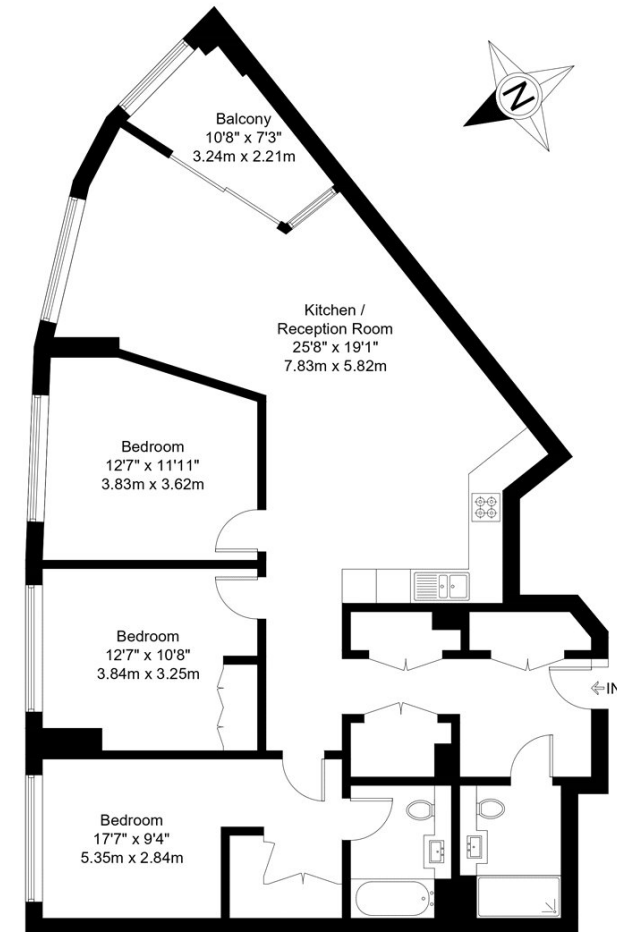
- Three bedrooms
- 25th floor
- Fully furnished
- Private balcony
- Concierge
- Residents gym
- Swimming pool
- Cinema and games room

Newcastle Place, W2

Approx Gross Internal Area = 106.6 sq m / 1147 sq ft

Balcony = 5.6 sq m / 60 sq ft

Total = 112.2 sq m / 1208 sq ft



Twenty-Fifth Floor

The Floor plan is not to scale and measurements and areas shown are approximate and therefore should be used for illustrative purposes only. The plan has been prepared in accordance with the RICS code of Measuring Practice and whilst we have confidence in the information produced it must not be relied on. Maximum lengths and widths are represented on the floor plan. If there is any aspect of particular importance, you should carry out or commission your own inspection of the property.

Copyright © BleuPlan

