



Waterman House, New Garden Quarter, E15 1GL

Price:
£ 700,000

Waterman House, New Garden Quarter, E15 1GL

Price: £ 700,000 3 bedroom house

[View Property](#)

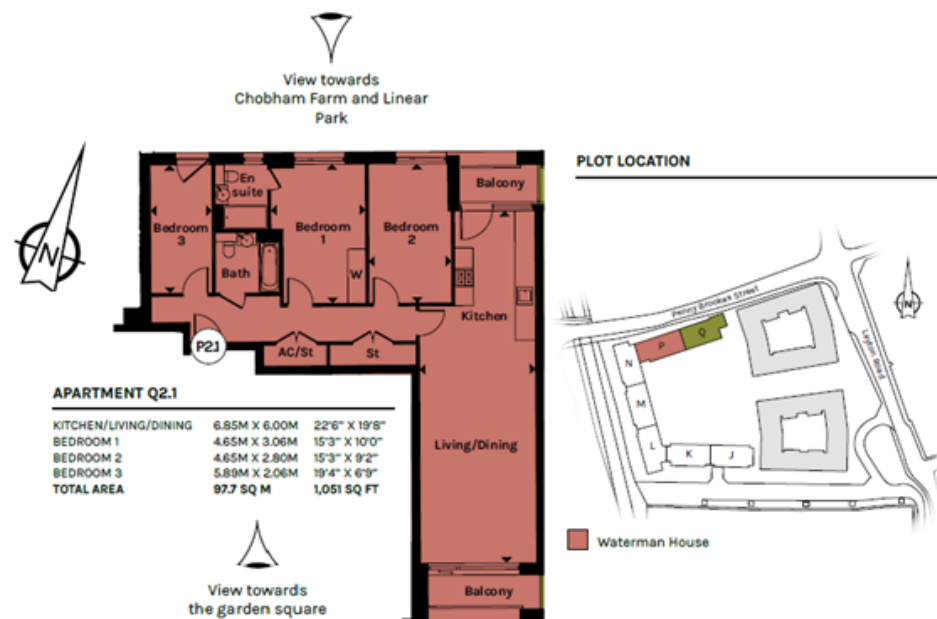
OVERVIEW

A spacious and well-presented three-bedroom apartment, extending to approximately 1,101 sq ft, set within the highly sought-after New Garden Quarter development, with the added benefit of secure allocated parking.

Positioned within Waterman House, this impressive apartment offers a well-balanced layout ideal for both owner-occupiers and investors. The property benefits from a bright and expansive open-plan living and dining area, leading onto a private balcony, creating an excellent space for both everyday living and entertaining. A separate kitchen area is neatly arranged, maximising both functionality and flow.

KEY FEATURES

- Three bedroom apartment spanning approximately 1,101 sq ft
- Dual aspect layout providing excellent natural light throughout
- Two private balconies offering additional outdoor space
- Spacious open plan living and dining area ideal for entertaining
- Principal bedroom with en suite plus modern family bathroom
- Secure allocated underground parking space (approx. £35,000 value)
- Located within the highly sought after New Garden Quarter development
- Walking distance to Stratford Station, Westfield and Queen Elizabeth Olympic Park



Energy Performance Certificates

Score	Energy rating	Current	Potential
92+	A		
81-91	B	85 B	85 B
69-80	C		
55-68	D		
39-54	E		
21-38	F		
1-20	G		

