



**Walton Clarke House, 5 Brigade Mews, SE1 0GH**

Price:

£ 4,500 /pcm

# Walton Clarke House, 5 Brigade Mews, SE1 0GH

Price: £ 4,500 /pcm2 bedroom house

[View Property](#)

## OVERVIEW

An exceptional two bedroom apartment located within Walton Clarke House, forming part of the prestigious Brigade Court development in SE1.

Designed to a high contemporary standard, the property features a spacious open-plan living and dining area, a fully integrated modern kitchen, two generously sized bedrooms including a principal bedroom with en-suite, and a sleek family bathroom.

## KEY FEATURES

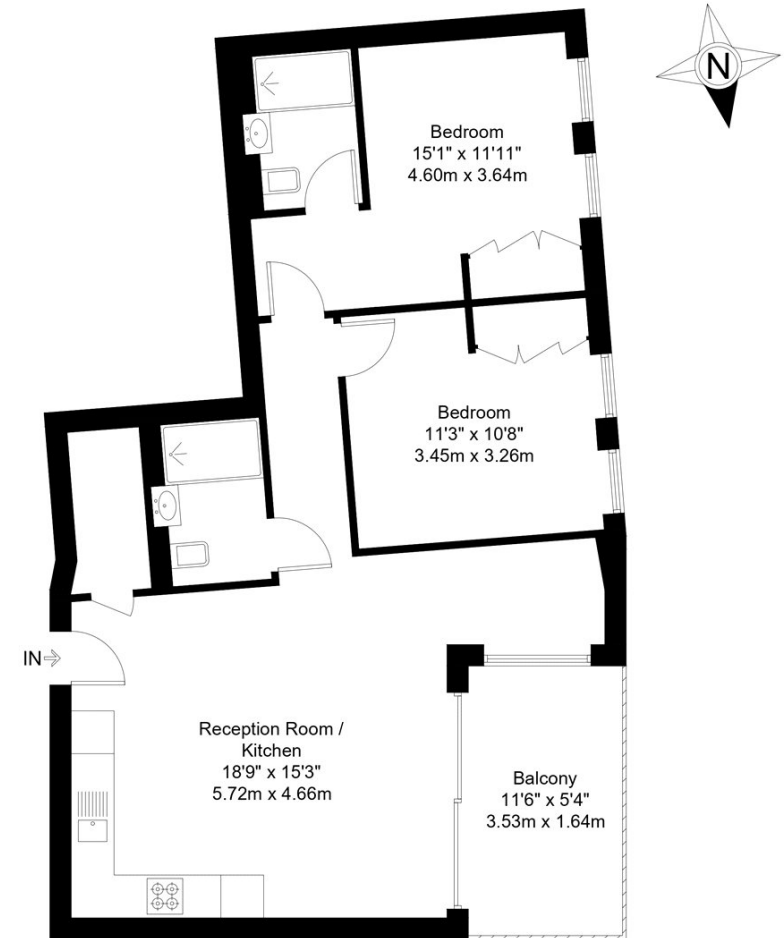
- Two bedroom
- Furnished
- Private balcony
- 24hr concierge
- Residents gym
- Cinema and lounge
- Excellent location

# Brigade Mews, SE1

Approx Gross Internal Area = 67.7 sq m / 729 sq ft

Balcony = 5.8 sq m / 62 sq ft

Total = 73.5 sq m / 791 sq ft



Fourth Floor

The Floor plan is not to scale and measurements and areas shown are approximate and therefore should be used for illustrative purposes only. The plan has been prepared in accordance with the RICS code of Measuring Practice and whilst we have confidence in the information produced it must not be relied on. Maximum lengths and widths are represented on the floor plan. If there is any aspect of particular importance, you should carry out or commission your own inspection of the property.

Copyright @ BleuPlan

