

ERNEST-BROOK
INTERNATIONAL**Victory Way, Rotherhithe, SE16 6QH**Price:
£ 325,000

Victory Way, Rotherhithe, SE16 6QH

Price: £ 325,000 1 bedroom house

[View Property](#)

OVERVIEW

Set on the ground floor, is this beautifully presented one bedroom apartment perfectly located in the quiet cul de sac of Victory Way.

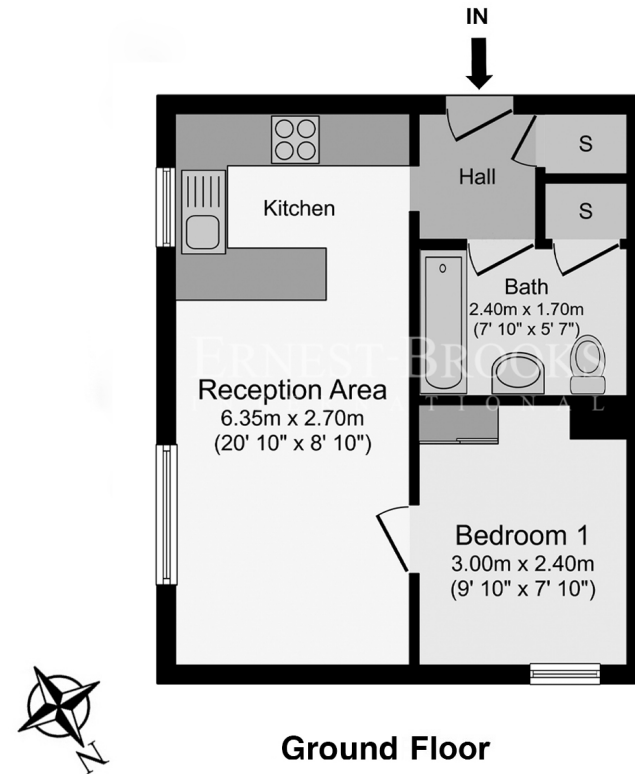
The property boasts a spacious double bedroom, a bright open plan lounge area with a fully fitted kitchen. The bathroom has a sleek modern finish. Residents parking is also available.

KEY FEATURES

- One bedroom
- Open plan lounge
- Fully fitted kitchen
- Gound floo
- Moden finish throughout
- Quiet esidential aea
- Allocated paking
- Pime location fo tanspot links
- Close to Russia Dock Woodland
- Chain Fee

Victory Way

ERNEST-BROOKS
INTERNATIONAL



Ground Floor

Total floor area 33.0 sq.m. (355 sq.ft.) approx

Whilst every attempt has been made to ensure the accuracy of the floor plan contained here, measurements of doors, windows, rooms and any other items are approximated and no responsibility is taken for any error, omission or mis-statement. This plan is for illustrative purposes only and should be used as such by prospective purchaser. The service, system and appliances shown have not been tested and no guarantee as to their operability or efficiency can be given.

Energy Performance Certificates

