



Velocity Building, 1 Ward Road, Stratford, E15 2LB

Price:
£ 340,000

Velocity Building, 1 Ward Road, Stratford, E15 2LB

Price: £ 340,000 1 bedroom house

[View Property](#)

OVERVIEW

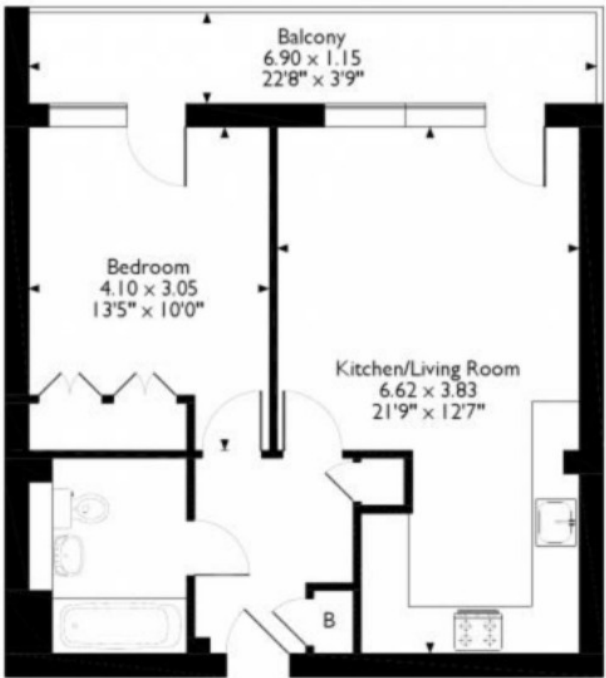
Recently renovated! This well designed one bedroom apartment spanning over (505 sqft), further boasting a private balcony and residents on street parking.

Well-presented one large double bedroom with plenty of storage including bespoke fitted wardrobes, the bathroom featuring a recent remodel, spacious kitchen with integrated Bosch and AEG appliances. This charming property has its private south-facing balcony & offers air conditioning.

KEY FEATURES

- Residents Roof Terrace
- Fee Paking Permit
- Lage 502 sqft Flooplan
- South-East facing
- Ai Conditioning
- Open Plan Kitchen
- Lage Pivate Balcony
- Caledonian Integrated Oak Flooing
- Renovated Bathoom
- 2 minute walk to Statfod High Steet DLR

Approximate Gross Internal Area
47 Sq M/502 Sq Ft



Third Floor

Please note that the location of doors, windows and other items are approximate and this floorplan is to be used for illustrative purposes only. Unauthorised reproduction is prohibited.

Energy Performance Certificates

Energy Efficiency Rating		
	Current	Potential
Very energy efficient - lower running costs		
(92+) A		
(81-91) B	82	82
(69-80) C		

