



Valentine House, 2 Sands End Lane, Kings Road Park, SW6 2QH

Price:

£ 795,000

Valentine House, 2 Sands End Lane, Kings Road Park, SW6 2QH

Price: £ 795,000 1 bedroom house

[View Property](#)

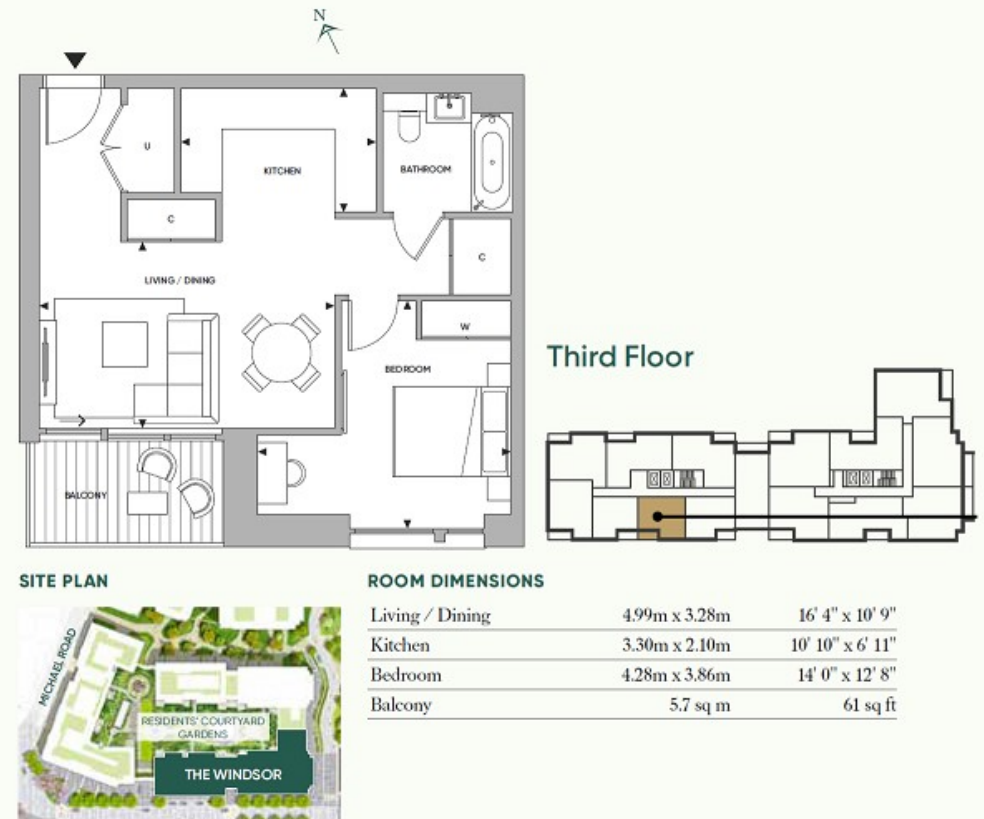
OVERVIEW

Luxury one bedroom apartment offered on the 3rd floor and located in within the next phase of Kings Road Park Valentine House, SW6

Spread over an impressive 565 Sq.Ft and offered with a 56 Sq.Ft south facing private balcony offers views towards the new tree lined pedestrianised area. Developed by St. Williams the standard of finishing is outstanding. Each apartment will have gorgeous Herringbone timber flooring, supplemented further with underfloor heating and comfort cooling as standard.

KEY FEATURES

- Newest phase of Kings Road Park
- Brand new furniture
- Third floor apartment
- South facing balcony
- Herringbone timber wood flooring
- Gym, swimming pool & spa
- Two cinema rooms
- Virtual gold room
- Dining & meeting room



Energy Performance Certificates

Energy Efficiency Rating

	Current	Potential
Very energy efficient - lower running costs		
(92+) A		
(81-91) B	85	85
(69-80) C		
(55-68) D		

