

Valencia Tower, 3 Bollinder Place, EC1V 2AP

Price:
£ 4,300 /pcm

Valencia Tower, 3 Bollinder Place, EC1V 2AP

Price: £ 4,300 /pcm2 bedroom house

[View Property](#)

OVERVIEW

Available soon is this bright and spacious two-bedroom apartment located on a mid floor in the prestigious Valencia Tower, part of the 250 City Road development.

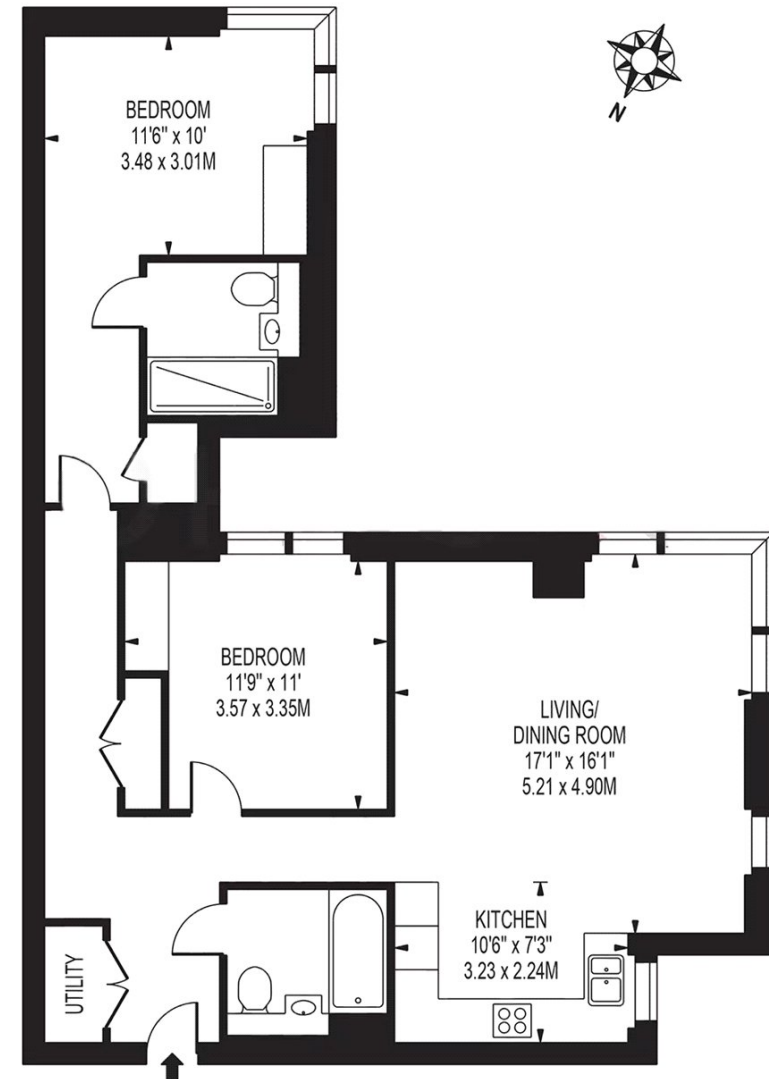
The apartment features a generously sized open-plan kitchen and reception area with floor-to-ceiling windows, two double bedrooms with fitted wardrobes including a master with en-suite, a large family bathroom and excellent storage throughout. The layout is designed for both comfort and practicality, ideal for professionals or sharers.

KEY FEATURES

- Two bedroom apartment
- Middle floor position
- Fully furnished throughout
- Over 900 sq ft of living space
- Spacious open-plan kitchen and reception
- 24-hour concierge and on-site security
- Luxury swimming pool, sauna and steam room
- Residents' gym and wellness spa
- Cinema, business lounge and games room
- Moments from Old Street and Angel stations

VALENCIA TOWER

APPROXIMATE GROSS INTERNAL FLOOR AREA: 904 SQ FT - 83.98 SQ M



THIRTEENTH FLOOR

FOR ILLUSTRATION PURPOSES ONLY

THIS FLOOR PLAN SHOULD BE USED AS A GENERAL OUTLINE FOR GUIDANCE ONLY AND DOES NOT CONSTITUTE IN WHOLE OR IN PART AN OFFER OR CONTRACT. ANY INTENDING PURCHASER OR LESSEE SHOULD SATISFY THEMSELVES BY INSPECTION, SEARCHES, ENQUIRIES AND FULL SURVEY AS TO THE CORRECTNESS OF EACH STATEMENT. ANY AREAS, MEASUREMENTS OR DISTANCES QUOTED ARE APPROXIMATE AND SHOULD NOT BE USED TO VALUE A PROPERTY OR BE THE BASIS OF ANY SALE OR LET.

