



Unison House, Grand Union, Beresford Avenue, HA0 1NW

Price:
£ 469,000

Unison House, Grand Union, Beresford Avenue, HA0 1NW

Price: £ 469,000 2 bedroom house

[View Property](#)

OVERVIEW

A superb, well positioned 3rd floor two bedroom apartment situated in Unison House, Grand Union. Compiled over (803 Sq. Ft) with a private balcony offering views toward the iconic, Wembley Stadium. Estimated completion Feb 2022

Unison House is located at the heart of Grand Union, part of St George's exclusive development, Unison House has views towards the Grand Union Canal or the arch of Wembley Stadium to the North. Grand Union will create a vibrant new canalside neighbourhood. Located in Alperton, close to Wembley with great connections into Central London. Enjoy a waterside piazza with cafes, restaurants, bars and a community centre at its heart. With 11 acres of landscaped gardens, riverside meadows and waterside pathways, Grand Union will be a unique waterside destination to play, work and relax.

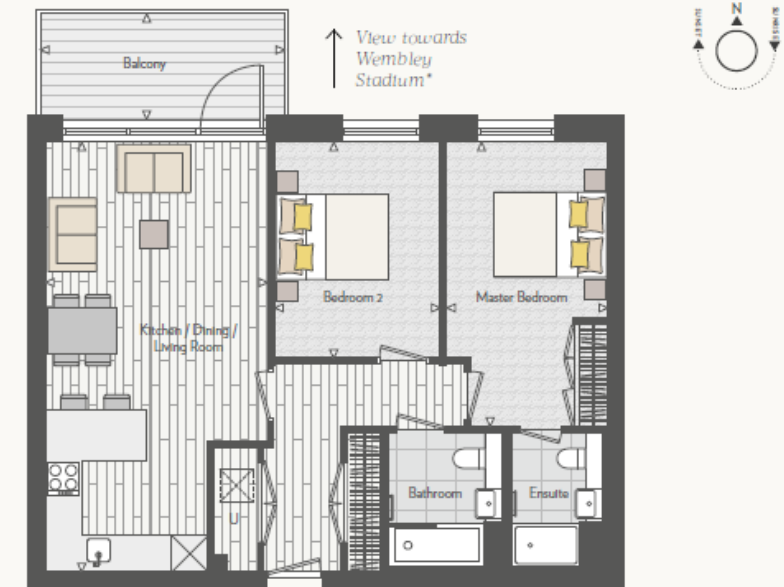
KEY FEATURES

- Large two bedroom apartment
- Private balcony
- New canalside neighbourhood
- Residents gym, lounge & bowling alley
- Easy access to the City & West End
- Stonebridge Park Station (Zone 3)
- Estimated service charge: £33.60 per Sq. Ft
- Ground rent: £3400 per annum
- Tenure: Leasehold 999 years
- Estimated completion: Feb 2022

2 BEDROOM APARTMENT

Apartments: 95, 101, 111 & 121

Floors: 01, 02, 03 & 04

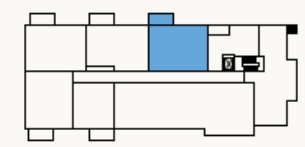


NORTH ELEVATION

PLOT 121 Floor: 04
PLOT 111 Floor: 03
PLOT 101 Floor: 02
PLOT 95 Floor: 01



FLOOR 01 SHOWN



TOTAL INTERNAL AREA	74.6 SQ M	803 SQ FT
TOTAL EXTERNAL AREA	7.5 SQ M	81 SQ FT
Kitchen / Dining / Living Room	7.54m x 5.93m	24'9" x 12'11"
Master Bedroom	4.99m x 2.85m	16'5" x 9'4"
Bedroom 2	3.80m x 2.90m	12'6" x 9'6"
Balcony	1.78m x 4.23m	5'10" x 13'11"

MEASUREMENT POINTS
U UTILITY CUPBOARD
W WASHING MACHINE
F FRIDGE FREEZER

