



**Twenty-Five, 25 Nutford Place, W1H 5YQ**

Price:

£ 7,750 /pcm

# Twenty-Five, 25 Nutford Place, W1H 5YQ

Price: £ 7,750 /pcm3 bedroom house

[View Property](#)

EBI

## Nutford Place

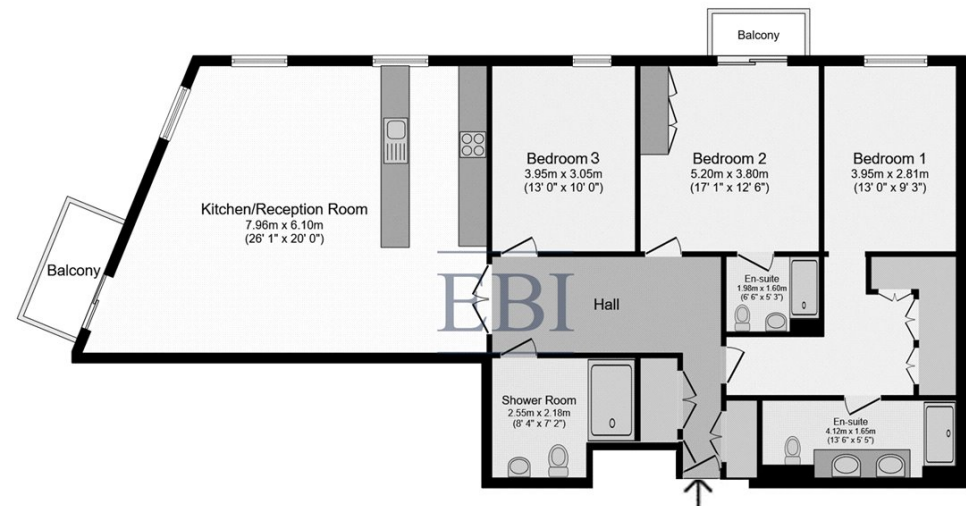
### OVERVIEW

Available now.

Grand three bedroom apartment situated on the 5th floor of the TwentyFive development in Marylebone. The apartment boasts 1,416 sq.ft. plus two balconies for dual aspect.

### KEY FEATURES

- Available NOW!
- Luxury apartment
- Three bedroom / three bathroom
- Two private balconies
- 1,406sqft
- Fully furnished
- 24 hour concierge and security
- Fully equipped gymnasium
- Parking included
- One storage room included



### Fifth Floor Plan

Floor area 127.2 sq.m. (1,677 sq.ft.)

Whilst every attempt has been made to ensure the accuracy of the floor plan contained here, measurements of doors, windows, rooms and any other items are approximated and no responsibility is taken for any error, omission or mis-statement. This plan is for illustrative purposes only and should be used as such by prospective purchaser. The service, system and appliances shown have not been tested and no guarantee as to their operability or efficiency can be given.



