



The Waterman, 5 Tidemill Square, SE10 0UE

Price:
£ 2,300 /pcm

The Waterman, 5 Tidemill Square, SE10 0UE

Price: £ 2,300 /pcm1 bedroom house

[View Property](#)

OVERVIEW

An exceptional one-bedroom apartment offering approximately 616sq ft of stylish internal living space, complemented by a generous private balcony.

Situated within the sought-after Waterman Building at Greenwich Peninsula, this contemporary development is renowned for its luxurious specification and premium interior finishes.

KEY FEATURES

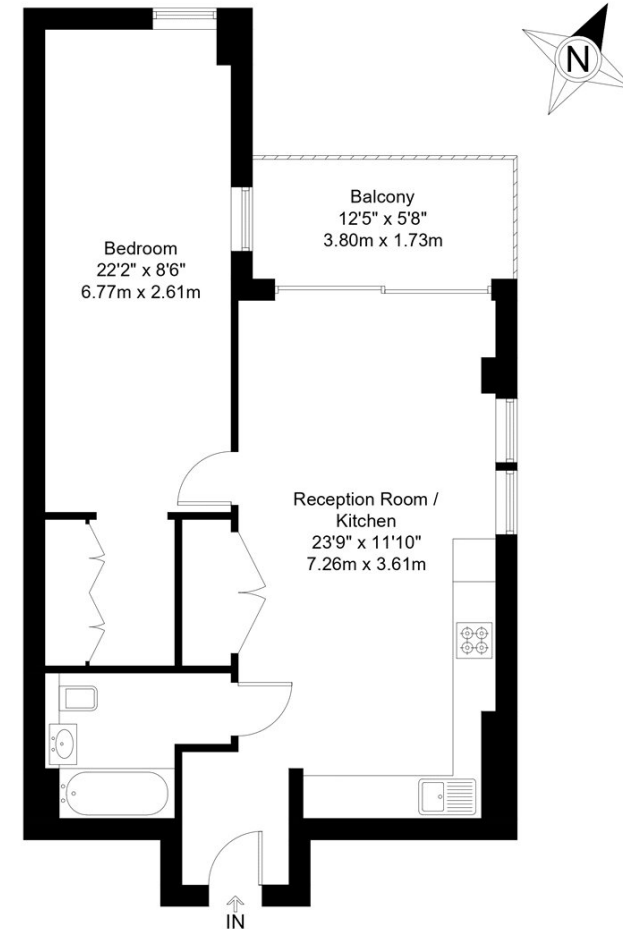
- One bedroom
- Furnished
- 13th floor
- Private balcony
- River views and O2 views
- 24hr concierge
- Residents gym
- Excellent transport links

Tidemill Square, SE10

Approx Gross Internal Area = 57.2 sq m / 616 sq ft

Balcony = 6.6 sq m / 71 sq ft

Total = 63.8 sq m / 687 sq ft



Thirteenth Floor

The Floor plan is not to scale and measurements and areas shown are approximate and therefore should be used for illustrative purposes only. The plan has been prepared in accordance with the RICS code of Measuring Practice and whilst we have confidence in the information produced it must not be relied on. Maximum lengths and widths are represented on the floor plan. If there is any aspect of particular importance, you should carry out or commission your own inspection of the property.

Copyright @ BleuPlan

