



The Wardian, West Tower, Marsh Wall, E14 9TP

Price:

£ 485,000

The Warden, West Tower, Marsh Wall, E14 9TP

Price: £ 485,000

[View Property](#)

OVERVIEW

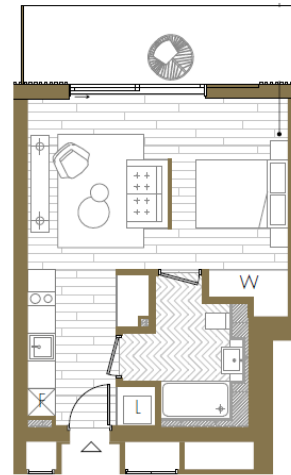
Luxury suite located in the West Tower. Comprising of (410 Sq. Ft) plus a generous (109 Sq. Ft) garden terrace with popular east views over the O2 & the River Thames.

In the midst of the skyscrapers and waterways of Canary Wharf, Warden London offers an oasis of nature. Comprising two iconic apartment towers East & West with restaurants, curated shops and first class facilities, the vision is to create a new address like no other, a haven of peace and beauty in the heart of London.

KEY FEATURES

- Perfect buy to let product
- Outstanding location close to Canary Wharf
- New benchmark for luxury living
- Innovative landscaping encountered throughout
- Exclusive membership to the Warden Club
- 53rd level Sky lounge inclusive of private dining and bar
- 25m athletic standard heated outdoor pool
- Estimated Service Charge: £36 psf
- Tenure: Leasehold 999 Years
- Completion due Q3 2020

WEST TOWER
LEVEL



Suite

Internal Area
38.1 sq m / 410 sq ft
Living Area
5650 x 3720 mm
Garden
10.1 sq m / 109 sq ft



