



The Silk District, Raven Row, E1 2JA

Price:
£ 435,000

The Silk District, Raven Row, E1 2JA

Price: £ 435,000

[View Property](#)

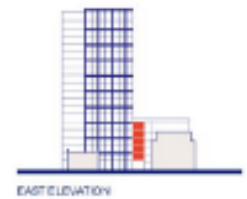
OVERVIEW

A superb studio apartment located in East London's premier development, The Silk District.

The property itself benefits from being over 481 sqft accompanied with an additional private balcony with superb views across the city.

KEY FEATURES

- Studio apartment
- Private balcony
- Leasehold: 999 years
- Ground rent: £3300 p/a
- Service charge: £34.25 per sqft
- Estimated completion: Q4 2021
- 24 Hour concierge
- 0.2 Miles from Whitechapel Station
- Walking distance from Shoreditch and The City
- Residents Gymnasium and Cinema



Total internal area	45 sqm	481 sq ft
LIVING/KITCHEN/DINING	30.0m x 27.0m	121'6" x 8'10"
BEDROOM	20.0m x 20.0m	65'6" x 65'6"
Total external area	5 sqm	55 sq ft
BALCONY	16.0m x 3.0m	52'6" x 9'10"



