



The Linter Building, Manchester New Square, M1 6DD

Price:
£ 250,000

The Linter Building, Manchester New Square, M1 6DD

Price: £ 250,000 1 bedroom house

[View Property](#)

OVERVIEW

Luxury large 7th floor apartment located in the popular Linter Building, Manchester New Square. The apartment comprises a generous reception area with kitchen space featuring integrated Bosch appliances. There is plenty of space for both a comfortable lounge space as well as a good sized dining space. The master bedroom benefits from built-in wardrobe space. There is also a generous bathroom space featuring Duravit sanitaryware.

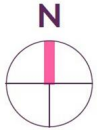
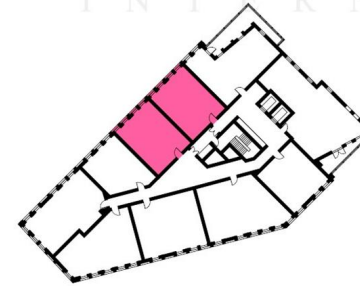
Manchester New Square apartments are in the heart of the action, but acoustically designed to ensure calm and tranquillity within. The apartments are finished to the highest standards with a clean and contemporary design. Characterful Karndean timber-effect flooring is fitted in the open-plan lounge, kitchen and corridors and the bright white walls are left uncluttered for you to add your own creative stamp.

KEY FEATURES

- One Bedroom (623Sq Ft) 7th Floor Apartment Manchester City Center
Location 24HR Concierge Services & On Site Amenities
Close to Picadilly and Oxford Road Train Stations
Close To Manchester University
Ground Rent: £250 par
Lease Term: 250 Years
Service Charge: £2.75 psf par
Estimated Completion: Q1 2020

1 BEDROOM APARTMENT TYPE 1-01-A

Number of Bedrooms	1
Sq m	57.9
Sq ft	623



7th Floor

