

# ERNEST-HENDON

INTERNATIONAL

## The Corniche, SE1 7TL

Price:  
£ 1,850,000

# The Corniche, SE1 7TL

Price: £ 1,850,000 2 bedroom house

[View Property](#)

## OVERVIEW

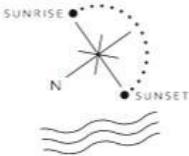
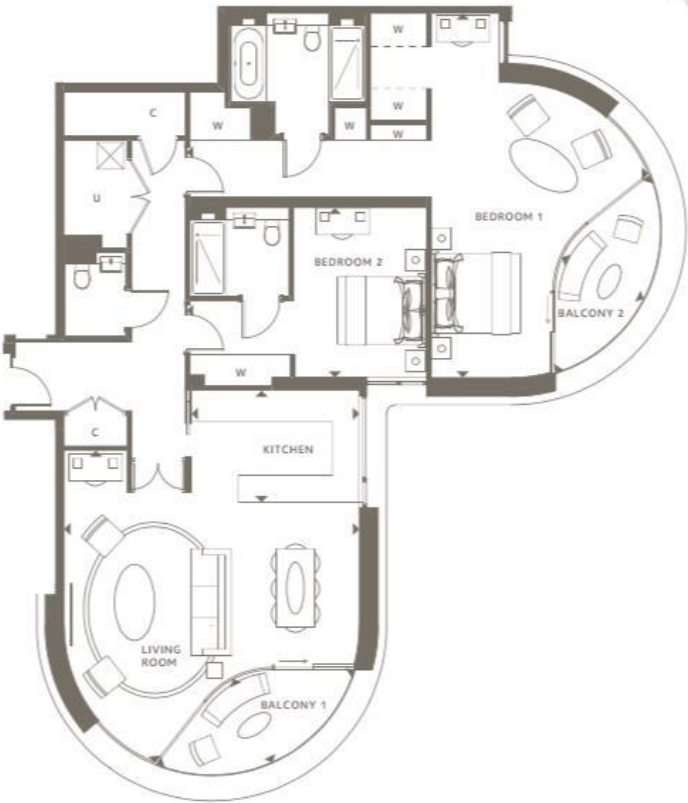
A luxury 12th floor two-bedroom three bathroom premier apartment spread over (1,446 Sq. Ft) Boasting a river facing balcony from the main reception, floor to ceiling windows and a high specification kitchen with designer integrated appliances. This property is located in a great position in the development offering breath-taking views down the River Thames and beyond.

Both bedrooms benefit their own en-suite bathrooms and the apartment also offers a separate WC as well as utility and substantial storage spaces. On site amenities at The Corniche include an infinity pool, spa, private screening room and club lounge with terrace.

## KEY FEATURES

- 12th Floor Premier Apartment 2 Bedroom / 3 Bathroom Direct River Views 1,446 sqft Plus Balcony Space Estimated Service charge: £37.00 per sq ft Estimated Ground rent: £3750 per annum Tenure: Leasehold 999 years Completion due May 2018 High Specification Finish OPEN 7 DAYS A WEEK!

## TWO BEDROOM APARTMENT



TYPE 8						
Apartment	46	51	56	61	66	71
Level	8	9	10	11	12	13
Living Room	6.60 x 6.98m		21'8" x 22'11"			
Kitchen	3.75 x 2.50m		12'4" x 8'2"			
Bedroom 1	10.31 x 8.15m		33'10" x 26'9"			
Bedroom 2	5.35 x 3.80m		17'7" x 12'6"			
Balcony 1	4.84 x 2.01m		15'11" x 6'7"			
Balcony 2	4.84 x 2.01m		15'11" x 6'7"			
Total Internal Area	134.35 m²		1,446.1 ft²			
Total External Area	12.48 m²		134.2 ft²			

KEY  
W Wardrobe  
C Cupboard  
U Utility



