



The Corniche, 24 Albert Embankment, SE1 7GJ

Price:
£ 525,000

The Corniche, 24 Albert Embankment, SE1 7GJ

Price: £ 525,000 1 bedroom house

[View Property](#)

OVERVIEW

Set within the prestigious riverside development of The Corniche at 24 Albert Embankment, Vauxhall, SE1, this beautifully presented second-floor one-bedroom apartment offers refined South Bank living in one of London's most architecturally significant residential addresses. Developed by St James, The Corniche is renowned for its luxury specification, exceptional amenities, and iconic position along the River Thames.

Spanning approximately 634 sq ft, the apartment features a bright and elegant open-plan living and kitchen area, designed to maximise natural light and create a seamless contemporary living experience. Floor-to-ceiling glazing enhances the sense of space, while the private balcony provides a peaceful outdoor retreat with views over the landscaped surroundings and riverside skyline. The double bedroom is well-proportioned and complemented by a sleek modern bathroom finished to a premium standard.

KEY FEATURES

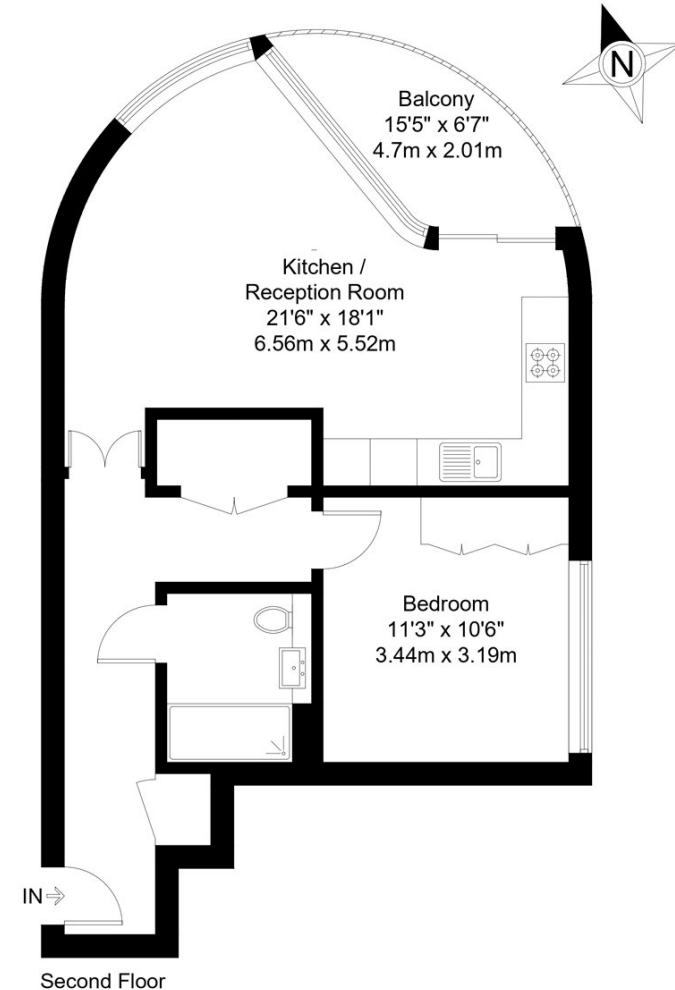
- Second floor one-bedroom apartment
- Approx. 634 sq ft internal space
- Private balcony outdoor space
- Landmark Corniche riverside development
- 24-hour concierge service
- Skyline Club Lounge (19th floor)
- Indoor infinity swimming pool
- Gym, spa and wellness suite
- Cinema, bowling and games rooms
- Prime South Bank SE1 location

Albert Embankment, SE1

Approx Gross Internal Area = 53.5 sq m / 576 sq ft

Balcony = 5.4 sq m / 58 sq ft

Total = 58.9 sq m / 634 sq ft



The Floor plan is not to scale and measurements and areas shown are approximate and therefore should be used for illustrative purposes only. The plan has been prepared in accordance with the RICS code of Measuring Practice and whilst we have confidence in the information produced it must not be relied on. Maximum lengths and widths are represented on the floor plan. If there is any aspect of particular importance, you should carry out or commission your own inspection of the property.
Copyright © BleuPlan

Energy Performance Certificates

