

An architectural rendering of a modern residential development. The scene features a tall, multi-story building with a grid-like facade of windows and balconies. In the foreground, a paved walkway curves through a landscaped courtyard with green grass, various trees (including cherry blossoms), and low-lying plants. Several people are shown in the courtyard: a man walking with a bag, a woman sitting on a bench, and a group of people near a small, cylindrical glass structure. The sky is blue with light clouds. The EBI logo is in the top right corner.

EBI

**Thames City, Nine Elms Lane, SW8 5EL**

Price:

£ 1,310,000

# Thames City, Nine Elms Lane, SW8 5EL

Price: £ 1,310,000 2 bedroom house

[View Property](#)

## OVERVIEW

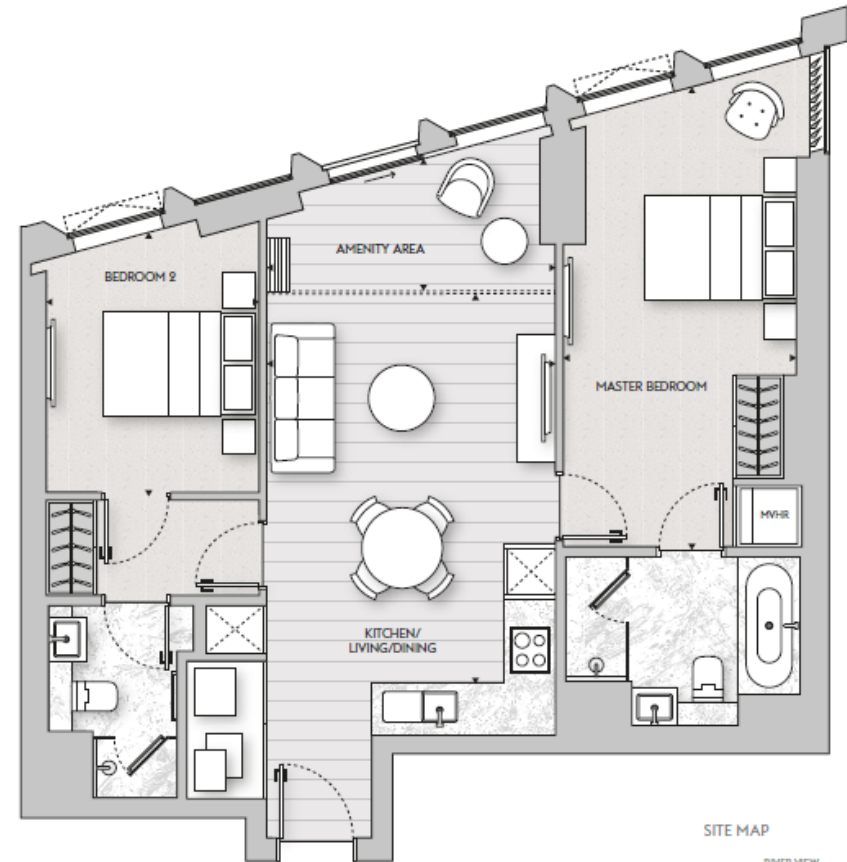
Well positioned two bedroom apartment perfectly located on the 20th floor of the eagerly awaited, Thames City development in Nine Elms. The apartment boasts a spacious 876 Sq.Ft with NE/SE aspect overlooking the Thames River and City! Completions from Q3 2022.

Building No.8 at One Thames City is one of three landmark towers set to become an iconic presence on the River Thames. With its waterside location and uninterrupted views, it is one of the most desirable destinations in London.

## KEY FEATURES

- Two bedroom apartment
- 876 Sqft.
- 20th floor
- Zone 1 Location
- 24-hour concierge service
- 30-metre swimming pool
- Fully equipped gym
- Private dining room
- Residents' cinema facilities
- Closest station: Nine Elms Underground

Floors 3-34  
2 bed apartment  
82.7 sq m / 891 sq ft to 86.2sq m / 928 sq ft



Level

15

Apartment Size Sq ft

891

