



Tellicherry Court, 14 Aberfeldy Square, E14 0XA

Price:
£ 2,550 /pcm

Tellicherry Court, 14 Aberfeldy Square, E14 0XA

Price: £ 2,550 /pcm2 bedroom house

[View Property](#)

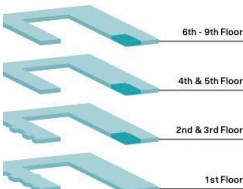
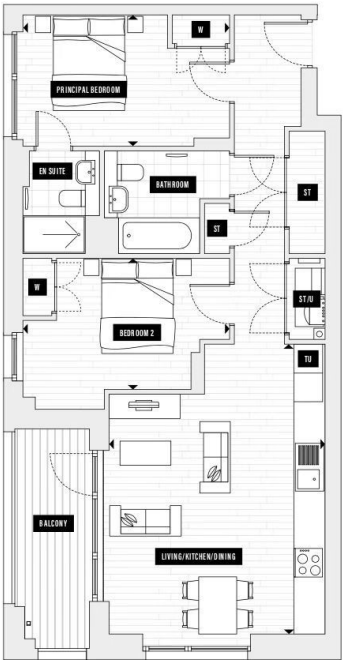
OVERVIEW

Located on a high floor within the contemporary Tellicherry Court, this spacious two-bedroom apartment offers bright, stylish living in the heart of Aberfeldy Village – just moments from Canary Wharf.

Designed with modern city living in mind, the property boasts a generous open-plan kitchen and reception area flooded with natural light via floor-to-ceiling windows. The sleek, fully integrated kitchen features high-spec appliances and ample storage, while the reception leads directly onto a private balcony with panoramic, far-reaching views.

KEY FEATURES

- Two spacious double bedrooms
- Open-plan kitchen and bright living area
- Private balcony with far-reaching views
- Floor-to-ceiling windows throughout
- Contemporary bathroom with sleek fittings
- Fully integrated modern kitchen
- High floor within secure building
- Lift access and video entry system
- Landscaped communal gardens for residents
- Easy access to Canary Wharf and the City



Living/Kitchen/Dining	6.1m x 4.5m	20'0" x 14'9"
Principal Bedroom	2.8m x 4.2m	9'2" x 13'9"
Bedroom 2	2.8m x 4.2m	9'2" x 13'9"
Total Internal Area	74.4 sq m	800.8 sq ft
External Area	8.1 sq m	87.2 sq ft

↔ Measurement Points	W Wardrobe	ST Store/Cupboard	TU Tall Unit	U Utility	❏ Fridge Freezer
----------------------	------------	-------------------	--------------	-----------	------------------

