

Taper Building, 175 Long Lane, SE1 4GT

Price:
£ 525,000

Taper Building, 175 Long Lane, SE1 4GT

Price: £ 525,000 1 bedroom house

[View Property](#)

OVERVIEW

Spacious one-bedroom apartment featuring a £12,000 luxury furniture package!

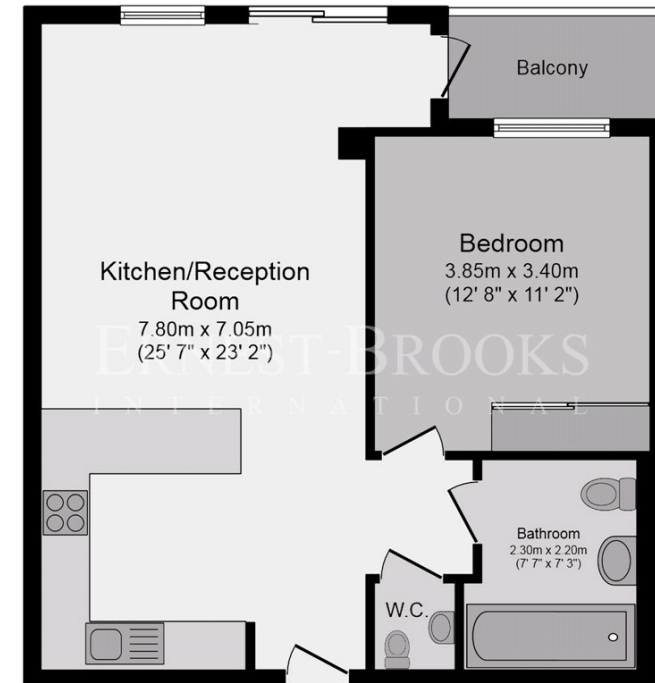
This is a remarkable chance to acquire a high-quality home or investment in the heart of Bermondsey, Zone 1's dynamic creative quarter. The Taper Building is positioned within a flourishing arts community centred on Bermondsey Street, home to celebrated cultural and culinary hotspots such as the White Cube Gallery and José Pizarro. Iconic London destinations - including Tower Bridge, Borough Market, and the South Bank - are all within easy walking distance.

KEY FEATURES

- One spacious double bedroom
- Integrated comfort cooling
- Underfloor heating throughout
- Sold chain free for a smooth transaction
- Prime Central London position
- Highly desirable Zone 1 location
- Situated in fashionable, sought-after Bermondsey
- Access to a state-of-the-art residents' gymnasium

Taper Building

ERNEST-BROOKS
INTERNATIONAL



Fifth Floor

Total floor area 56.1 sq.m. (604 sq.ft.) approx

Whilst every attempt has been made to ensure the accuracy of the floor plan contained here, measurements of doors, windows, rooms and any other items are approximated and no responsibility is taken for any error, omission or mis-statement. This plan is for illustrative purposes only and should be used as such by prospective purchaser. The service, system and appliances shown have not been tested and no guarantee as to their operability or efficiency can be given.

