



**Taper Building, 175 Long Lane, SE1 4GT**

Price:

£ 525,000





# Taper Building, 175 Long Lane, SE1 4GT

Price: £ 525,000 1 bedroom house

[View Property](#)

## OVERVIEW

Large one bed with a £12,000 furniture pack included! An exceptional opportunity to invest in the very heart of Bermondsey, Zone 1's creative hub.

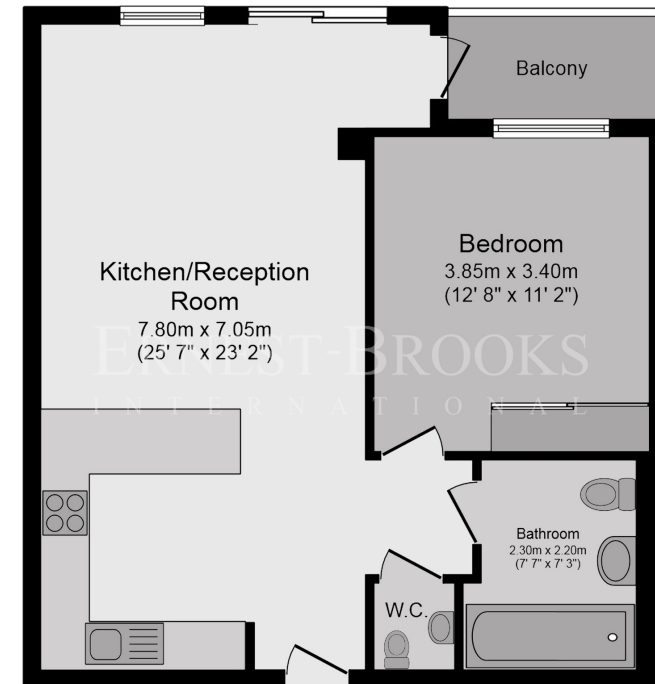
The Taper Building forms part of the arts neighbourhood in and around Bermondsey Street, featuring big names in culture and food such as the White Cube Gallery and Jose Pizarro. It is also within walking distance of landmarks including Tower Bridge, Borough Market and the South Bank. Every one of the living spaces will benefit from a very high specification and finishing, and each apartment will boast the rare commodity of outdoor space.

## KEY FEATURES

- One bedroom
- Comfort cooling
- Underfloor heating
- Sold Chain Free
- Central London
- Zone 1 location
- 10 year premier warranty
- Located in fashionable Bermondsey
- State of the art gymnasium

# Taper Building

ERNEST-BROOKS  
INTERNATIONAL



## Fifth Floor

Total floor area 56.1 sq.m. (604 sq.ft.) approx

Whilst every attempt has been made to ensure the accuracy of the floor plan contained here, measurements of doors, windows, rooms and any other items are approximated and no responsibility is taken for any error, omission or mis-statement. This plan is for illustrative purposes only and should be used as such by prospective purchaser. The service, system and appliances shown have not been tested and no guarantee as to their operability or efficiency can be given.

Energy Performance Certificates



