



Stratosphere Tower, E15 1AZ

Price:
£ 455,000

Stratosphere Tower, E15 1AZ

Price: £ 455,000 1 bedroom house

[View Property](#)

OVERVIEW

Lovely City & Olympic park facing 10th floor apartment, spread over (565 Sq. Ft.) with a winter garden.

Stratford station, including Tube, Overground, DLR and National Rail connections, is only a two-minute walk from the Stratosphere development. Stratosphere will set a new level of luxury for the Stratford area with facilities such as 24 hour concierge services, private residents' roof-top garden, Wi-Fi lounge, gymnasium and underfloor heating throughout.

KEY FEATURES

- 565sqft - 10th floor
- West facing towards Olympic Park
- 24 Hour concierge services
- Wi-Fi Lounge & gymnasium
- Private residents' roof-top garden
- 10 Year NHBC Warranty
- Tenure: Leasehold 999 Years
- Est Service charge: £3.50 psf pa
- Ground rent: £350 pa

FLOOR TEN

APARTMENT

Kitchen/Living/Dining/Wintergarden

8.77m x 3.32m 28'9" x 10'11"

Bedroom

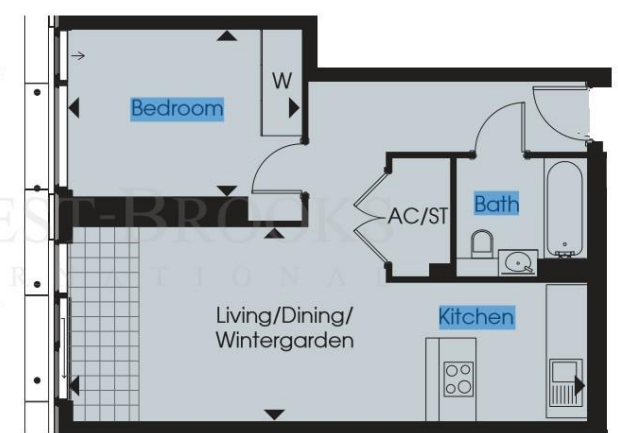
3.94m x 2.87m 12'11" x 9'5"

Total Area

52.5 sq m 565 sq ft



View towards The City,
Queen Elizabeth
Olympic Park &
Westfield Stratford City



View towards Canary Wharf, The City
& Queen Elizabeth Olympic Park

