

ERNEST-BROOKS
INTERNATIONAL

Stratosphere Tower, E15 1AZ

Price:
£ 339,950

Stratosphere Tower, E15 1AZ

Price: £ 339,950 1 bedroom house

[View Property](#)

OVERVIEW

Luxury 5th floor One Bedroom 'suite' spread over (374 Sq. Ft.) offering favorable views towards The City and Olympic park. Available in the well awaited Stratosphere, Stratford, E15.

Stratford station, including Tube, Overground, DLR and National Rail connections, is only a two-minute walk from the Stratosphere development. Stratosphere will set a new level of luxury for the Stratford area with facilities such as 24 hour concierge services, private residents' roof-top garden, Wi-Fi lounge, gymnasium and underfloor heating throughout.

KEY FEATURES

- 374 sqft - 5th Floor - South Aspect 24 hour concierge services Wi-Fi lounge & gymnasium Private residents' roof-top garden 10 Year NHBC Warranty Leasehold 999 years Estimated Service charge: £33.50 per sq ft Estimated Ground rent: £33.50 per sq ft Completion due Winter 2017

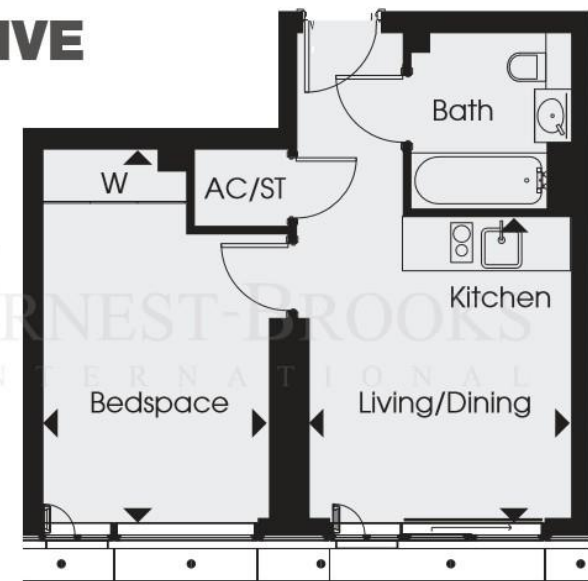
FLOOR FIVE

SUITE

Kitchen/Living/Dining
3.84m x 3.28m 12'7" x 10'9"

Bedspace
4.68m x 2.82m 15'4" x 9'3"

Total Area
34.7 sq m 374 sq ft



View towards Canary Wharf, The City & Queen Elizabeth Olympic Park

