

ER - ERKS  
I N A L

**Stratosphere, Stratford, E15 1AZ**

Price:  
£ 345,000

# Stratosphere, Stratford, E15 1AZ

Price: £ 345,000

[View Property](#)

## OVERVIEW

5th floor studio suite spread over (374 Sq. Ft.) Available for sale in Stratosphere, Stratford, E15. Stratford station, including Tube, Overground, DLR and National Rail connections, is only a two-minute walk from the Stratosphere development. Stratosphere will set a new level of luxury for the Stratford area with facilities such as 24 hour concierge services, private residents' roof-top garden, Wi-Fi lounge, gymnasium and underfloor heating throughout.

Located in London's new metropolitan centre and home to the 2012 Olympics, the area's regeneration has attracted over £12.5bn of investment to date. The scheme itself is situated in close proximity to Stratford International Station and Westfield Stratford (the largest urban shopping centre in Europe). UCL and the London School of Fashion) will also be delivered in 2019.

## KEY FEATURES

- 374 sqft - 5th Floor -South Aspect  
24 hour concierge services  
Wi-Fi lounge & gymnasium  
Private residents' roof-top garden  
10 Year NHBC Warranty  
Leasehold 999 years  
Est Service charge: £3.50 psf par  
Est Ground rent: £350 par  
Completion due Winter 2017

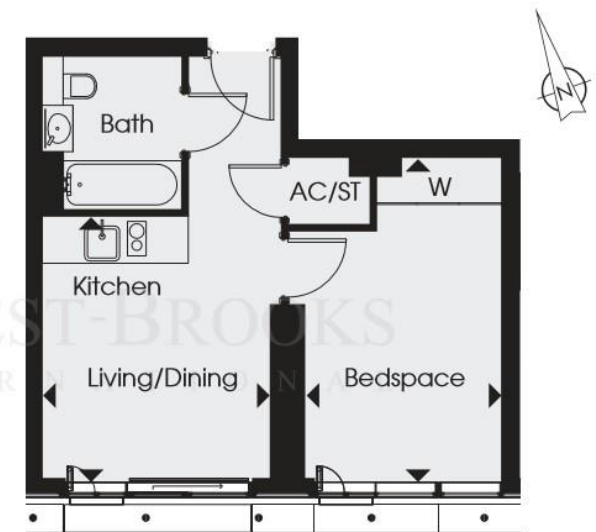
## FLOOR FIVE

### SUITE

**Kitchen/Living/Dining**  
3.84m x 3.28m 12'7" x 10'9"

**Bedspace**  
4.68m x 2.82m 15'4" x 9'3"

**Total Area**  
34.7 sq m 374 sq ft



View towards Canary Wharf, The City & Queen Elizabeth Olympic Park

