

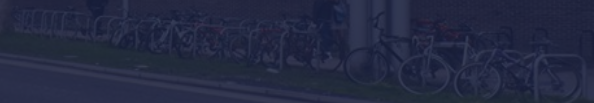
ERNINGHAM-BROOK

INTERNATIONAL



Stratford Central, E15 1AZ

Price:
£ 390,000



Stratford Central, E15 1AZ

Price: £ 390,000 1 bedroom house

[View Property](#)

OVERVIEW

PRICED TO SELL This well positioned 8th floor one bedroom apartment (540 Sq. Ft) with views towards Canary Wharf! Located in Stratford Central development. Stratford Central will set a new level of luxury for the Stratford area with facilities such as a concierge service, residents gym, under-floor heating and comfort cooling to all apartments.

Moments from the Jubilee line and bus links on the doorstep. Located next to London's new metropolitan center and home to the 2012 Olympics, the area's regeneration has attracted over £12.5bn of investment to date. The scheme itself is situated in close proximity to Stratford International Station and Westfield Stratford (the largest urban shopping center in Europe). UCL and the London School of Fashion) will also be delivered in 2019.

KEY FEATURES

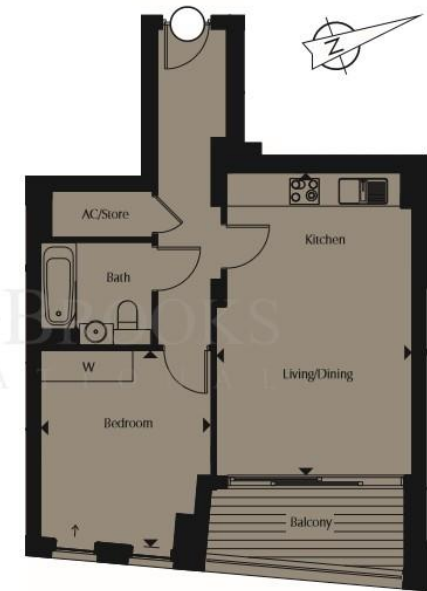
- 8th Floor One Bedroom Apartment
• 24hr Concierge Services
• Private Residents' Gymnasium
• Secured Bicycle Storage
• Under-Floor Heating
• 10 Year NHBC Warranty
• Ground Rent: £275 per year
• Estimated Service charge: £3.24 per square foot
• Tenure: Leasehold 250 Years
• Completion due Q2 2018

LEVEL

8

APARTMENT

Kitchen/Living/Dining	5.96m x 3.82m	19'7" x 12'7"
Bedroom	3.82m x 3.33m	12'7" x 10'11"
Total Area	50.1 sq m	539 sq ft



 View towards Canary Wharf

