



ERNET ROOM
INTERNATIONAL

Stratford Central, E15 1AZ

Price:
£ 388,000

STRATFORD CENTRAL
020 3536 3465

Stratford Central, E15 1AZ

Price: £ 388,000 1 bedroom house

[View Property](#)

OVERVIEW

Well positioned 6th floor apartment offering (539 Sq. Ft) with popular views on offer towards Canary Wharf! Stratford Central will set a new level of luxury for the Stratford City area with facilities such as a concierge service, residents gym, under-floor heating and comfort cooling to all apartments.

Moments from the Jubilee line and bus links on the doorstep. Located next to London's new metropolitan center and home to the 2012 Olympics, the area's regeneration has attracted over £12.5bn of investment to date. The scheme itself is situated in close proximity to Stratford International Station and Westfield Stratford (the largest urban shopping center in Europe). UCL and the London School of Fashion) will also be delivered in 2019.

KEY FEATURES

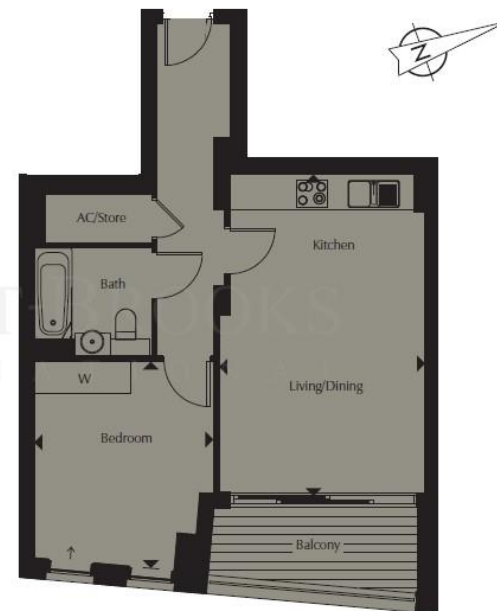
- 6th Floor Canary Wharf Aspect
• 24hr Concierge Services
• Private Residents' Gymnasium
• Secured Bicycle Storage
• Under-Floor Heating
• 10 Year NHBC Warranty
• Est Ground Rent: £275 par
• Est Service charge: £3.24 psf par
• Tenure: Leasehold 250 Years
• Completion due May 2018


LEVEL

6

APARTMENT

Kitchen/Living/Dining	5.96m x 3.82m	19'7" x 12'7"
Bedroom	3.82m x 3.33m	12'7" x 10'11"
Total Area	50.1 sq m	539 sq ft



 View towards Canary Wharf

