



Stratford Central, E15 1AZ

Price:
£ 440,000

Stratford Central, E15 1AZ

Price: £ 440,000 1 bedroom house

[View Property](#)

OVERVIEW

PRICED TO SELL Well positioned 22nd floor! east facing apartment offering (539 Sq. Ft) of London skyline views over the O2 Arena, Canary Wharf & The River Thames! The apartment is comprising of a lounge/kitchen/diner, a bathroom and master bedroom. Available in the eagerly anticipated Stratford Central development by Telford Homes. Completion due late September / October 2018. (Photos show exact layout of the property for sale but are taken in a lower level apartment)

Stratford Central will set a new level of luxury for the Stratford area with facilities such as a concierge service, residents gym and high specification finish to all apartments.

KEY FEATURES

- 22nd Floor Skyline Views! 24h Concierge Services Private Residents' Gymnasium Secured Bicycle Storage 10 Year NHBC Warranty Under-Floor Heating Estimated Ground Rent: £3275 pa Estimated Service Charge: £33.24 per sqft. Leasehold: 250 Years Completion due Sep / Oct 2018

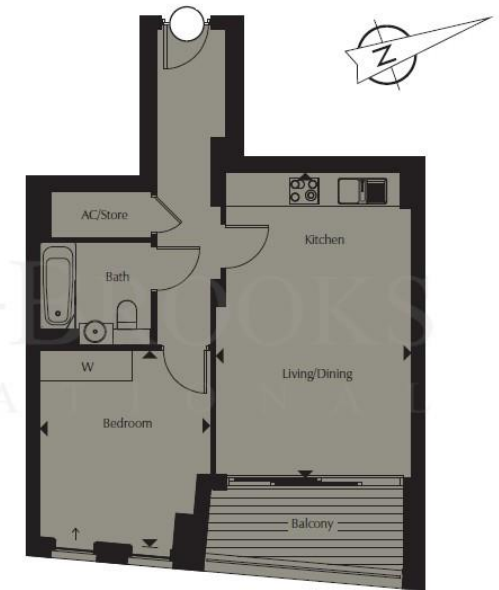
LEVEL
22

APARTMENT

Kitchen/Living/Dining 19'7" x 12'7"

Bedroom 12'7" x 10'11"

Total Area 539 sq ft



 View towards The River Thames,
The O2 & Canary Wharf

