

ERNEST BROOKS
INTERNATIONAL

Somerville Point, 305 Rotherhithe Street, SE16 5EQ

Price:
£ 585,000

Somerville Point, 305 Rotherhithe Street, SE16 5EQ

Price: £ 585,000 2 bedroom house

[View Property](#)

OVERVIEW

Situated on the south bank, Somerville Point located on Rotherhithe Street offers superb locality aligned with stunning views of the river Thames.

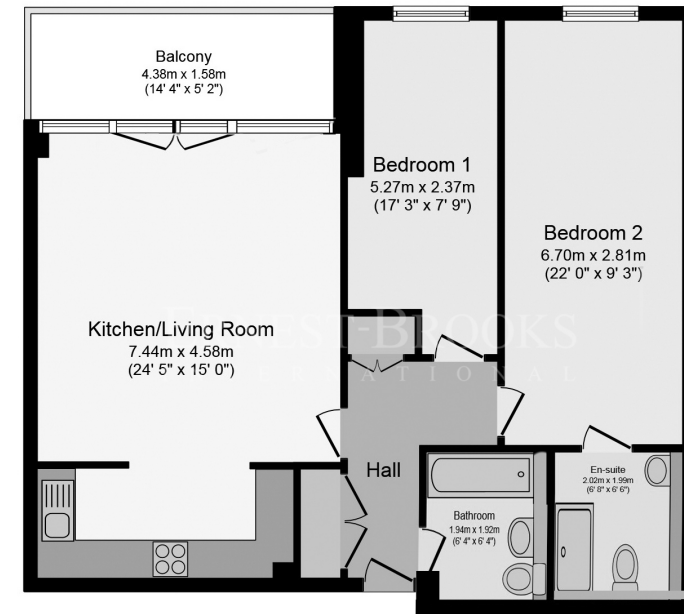
The riverside apartment itself has been well maintained and modernised to a high standard which sets it apart from other units in the development. The master bedroom is well sized and benefits from an en-suite. The second bedroom is bright and the large window welcomes sunlight throughout the day. The property has been adapted throughout to maximise space by reduced boxing in the kitchen and bathrooms, widening of the kitchen entrance and the removal of the built-in wardrobe.

KEY FEATURES

- Two bedroom apartment
- Underground allocated parking
- Master bedroom with en-suite facility
- Situated on the second floor of the development
- Private balcony with river Thames views
- Communal gardens
- Modernised to a high standard throughout
- 1 Mile from Canada Water Station
- Located extremely close to Russia Dock Woodlands
- Suez Quays shopping centre on your doorstep

Somerville Point

ERNEST-BROOKS
INTERNATIONAL



Second Floor Plan

Floor area 81.0 sq. m. (872 sq. ft.) approx

Whilst every attempt has been made to ensure the accuracy of the floor plan contained here, measurements of doors, windows, rooms and any other items are approximated and no responsibility is taken for any error, omission or mis-statement. This plan is for illustrative purposes only and should be used as such by prospective purchaser. The service, system and appliances shown have not been tested and no guarantee as to their operability or efficiency can be given.

Energy Performance Certificates

