



Smithfield Square, Hornsey, N8 8DH

Price:
£ 629,950

Smithfield Square, Hornsey, N8 8DH

Price: £ 629,950 2 bedroom house

[View Property](#)

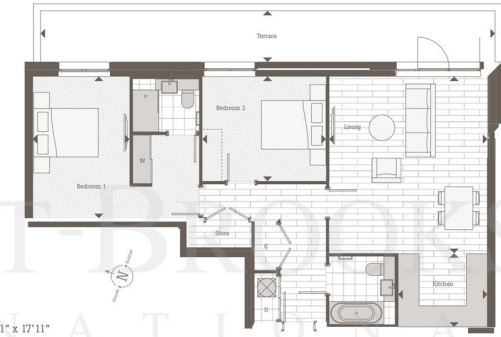
OVERVIEW

A 941sq ft two bedroom apartment on the second floor of Smithfield Square by Berkeley:St James in Crouch End, N8.

This expansive 2 bedroom apartment faces eastward into the garden space in the center of the development.

KEY FEATURES

- 1181SQFT: 941sq ft internal + 240sq ft Terrace2nd Floor - 2 Bedroom ApartmentrBerkeley St James SpecificationrGarden FacingrParking IncludedrClose To Local AmenitiesrEst Ground rent: £500PArEst Service Charge: £3.72rLease Term: 999yrs from 2003



Living	4.90m x 5.47m	16'1" x 17'11"
Kitchen	2.76m x 2.28m	9'1" x 7'6"
Bedroom 1	3.0m x 4.38m	9'10" x 14'5"
Bedroom 2	3.83m x 3.23m	12'7" x 10'7"
Terrace	14.07m x 1.56m	46'2" x 5'2"
Total Internal Area	87.44 sq m	941 sq ft
Terrace Area	22.30 sq m	240 sq ft



