

EBI

Skylark Point, 48 Newnton Close, N4 2BX

Price:
£ 1,900 /pcm

Skylark Point, 48 Newnton Close, N4 2BX

Price: £ 1,900 /pcm1 bedroom house

[View Property](#)

OVERVIEW

Available now is this bright one-bedroom apartment featuring a private balcony, located in Woodberry Down.

The open-plan layout includes a kitchen, living area that extends to the balcony, a double bedroom, and a modern bathroom. Notable features include wood flooring throughout the main areas, large windows allowing plenty of natural light, and high-quality fixtures in both the kitchen and bathroom.

KEY FEATURES

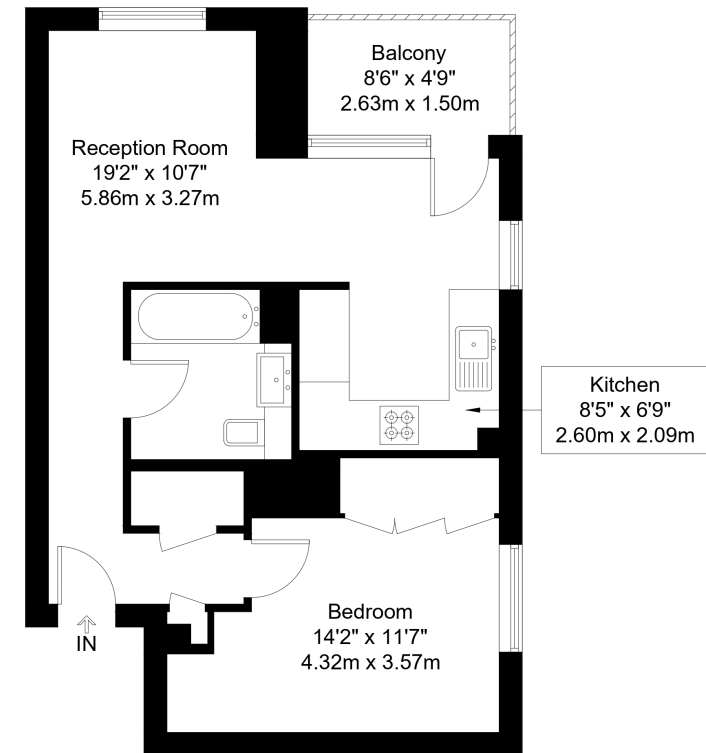
- Available now
- One bedroom
- Furnished
- Balcony
- 24hr concierge
- Residential gym and pool
- Great transport links

Newnton Close, N4

Approx Gross Internal Area = 45.68 sq m / 492 sq ft

Balcony = 3.95 sq m / 42 sq ft

Total = 49.63 sq m / 534 sq ft



Sixth Floor

The Floor plan is not to scale and measurements and areas shown are approximate and therefore should be used for illustrative purposes only. The plan has been prepared in accordance with the RICS code of Measuring Practice and whilst we have confidence in the information produced it must not be relied on. Maximum lengths and widths are represented on the floor plan. If there is any aspect of particular importance, you should carry out or commission your own inspection of the property.
Copyright © BleuPlan

