

Skylark Point, 48 Newnton Close, N4 2BX

Price:
£ 450,000

Skylark Point, 48 Newton Close, N4 2BX

Price: £ 450,000 1 bedroom house

[View Property](#)

OVERVIEW

A bright and contemporary one-bedroom apartment with a private balcony, situated within the highly sought-after Woodberry Down development.

The apartment boasts a spacious open-plan kitchen and living area leading seamlessly to the private balcony, a generously sized double bedroom, and a sleek, modern bathroom. High-quality finishes include wood flooring throughout the main living spaces, expansive floor-to-ceiling windows flooding the rooms with natural light, and premium fixtures and fittings throughout.

KEY FEATURES

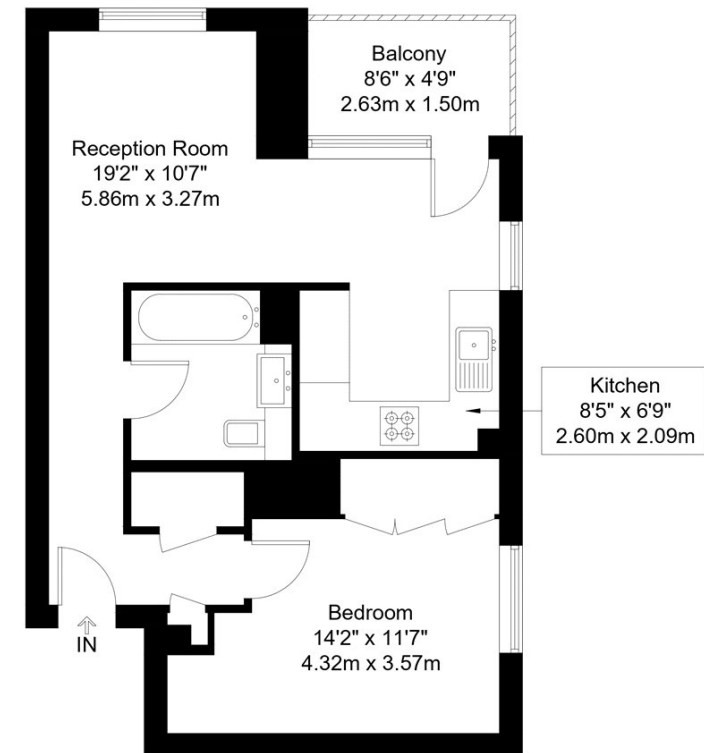
- Bright one-bedroom apartment with private balcony
- Open-plan kitchen and living area with quality finishes
- Modern bathroom with premium fixtures
- Wood floors and floor-to-ceiling windows throughout
- Residentsu2019 gym, pool, and 24-hour concierge
- Set beside Woodberry Wetlands and reservoirs
- On-site shops, cafu00e9s, and restaurants
- Excellent transport links: 7 mins to Manor House, 15 mins to Haringgay

Newton Close, N4

Approx Gross Internal Area = 45.68 sq m / 492 sq ft

Balcony = 3.95 sq m / 42 sq ft

Total = 49.63 sq m / 534 sq ft



Sixth Floor

The Floor plan is not to scale and measurements and areas shown are approximate and therefore should be used for illustrative purposes only. The plan has been prepared in accordance with the RICS code of Measuring Practice and whilst we have confidence in the information produced it must not be relied on. Maximum lengths and widths are represented on the floor plan. If there is any aspect of particular importance, you should carry out or commission your own inspection of the property.
Copyright © BleuPlan

Energy Performance Certificates

