



## Sky View Tower, 12 High Street, E15 2PP

Price:

£ 334,950



# Sky View Tower, 12 High Street, E15 2PP

Price: £ 334,950 1 bedroom house

[View Property](#)

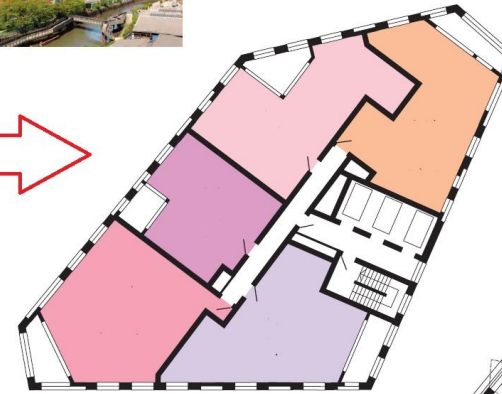
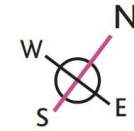
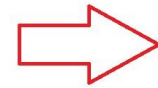
## OVERVIEW

PRICED TO SELL! This 6th floor, one bedroom, one bathroom apartment wont be around long. Spread over (538sq ft) plus private balcony. Set within Galliard Homes eagerly anticipated Skyview Tower, E15

This sixth floor apartment in Skyview Tower would make an ideal investment or first time buy and comprises an open plan reception with modern fitted kitchen, one double bedroom, en-suite, a separate WC as well as storage and a private balcony.

## KEY FEATURES

- 6th Floo - 538sq ft
- Geat Buy To Let Poduct
- High Specification Finish
- South-West Aspect
- Tenue: Leasehold 999 yeas
- Est Sevice Chage: u00a333 psf
- Est Gound Rent: u00a3350 pe annum
- Est Completion: Q3 2017
- Closest Station: Pudding Mill Lane DLR
- Not Available Fo Help To Buy



Total area:	50 sq.m.	538 sq.ft.
Living/dining area	5.8 x 4.2m	19'0" x 13'8"
Kitchen area	2.4 x 2.5m	7'10" x 8'2"
Bedroom	4.9 x 2.8m	16'0" x 9'2"

