



**Sky View Tower, 12 High Street, E15 2GT**

Price:  
£ 498,000





# Sky View Tower, 12 High Street, E15 2GT

Price: £ 498,000 3 bedroom house

[View Property](#)

## OVERVIEW

A sleek and contemporary three-bedroom, apartment situated on the fourteenth floor of Sky View Tower in Stratford's vibrant district. Designed with a focus on abundant natural light and spaciouly proportioned interiors, this residence promises a living experience of exceptional quality and style.

Sky view tower also offers concierge, private residents` lounge, a fully equipped gymnasium and cinema room. You can also relax on the roof top garden and enjoy the views over the city.

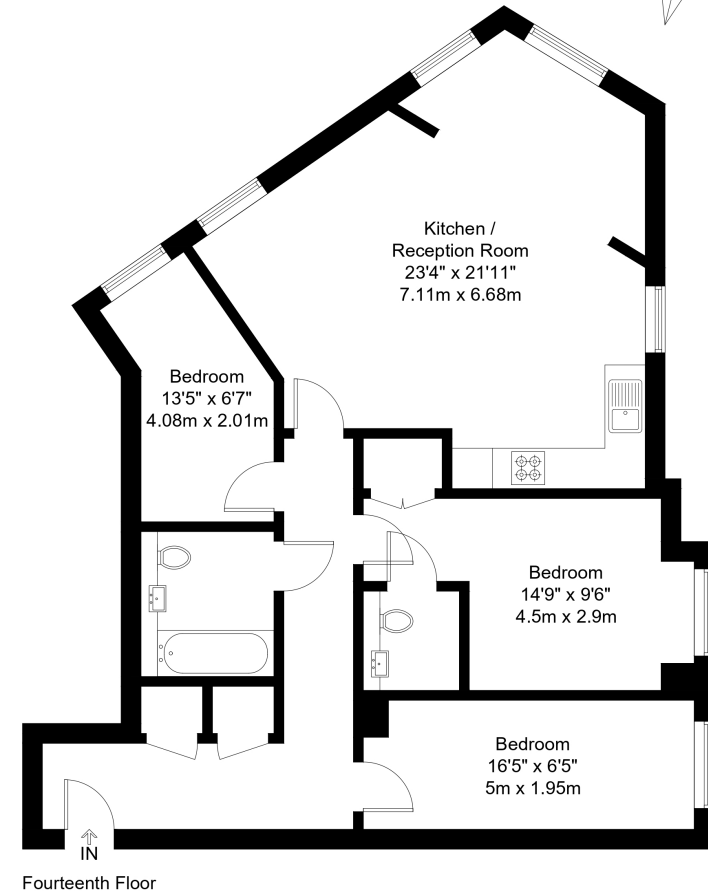
## KEY FEATURES

- Chain free
- Three bedrooms
- Two bathrooms
- 14th floor
- Over 920 sq ft
- Private residentsu2019 lounge
- 24-hour concierge
- Roof garden
- Residentsu2019 gym

# High Street, E15

Approx Gross Internal Area = 85.8 sq m / 924 sq ft

EBI



The Floor plan is not to scale and measurements and areas shown are approximate and therefore should be used for illustrative purposes only. The plan has been prepared in accordance with the RICS code of Measuring Practice and whilst we have confidence in the information produced it must not be relied on. Maximum lengths and widths are represented on the floor plan. If there is any aspect of particular importance, you should carry out or commission your own inspection of the property.  
Copyright @ BleuPlan

Energy Performance Certificates

