



Sky View Tower, 12 High Street, E15 2GT

Price:
£ 3,000 /pcm

Sky View Tower, 12 High Street, E15 2GT

Price: £ 3,000 /pcm3 bedroom house

[View Property](#)

OVERVIEW

HMO Licence. Situated within the sought-after Sky View Tower development in Stratford, this exceptional furnished three-bedroom apartment offers spacious contemporary living in one of East London's most vibrant and well-connected locations. Benefiting from an HMO licence, the property is ideally suited to professional sharers seeking high-quality accommodation with excellent transport links and access to an outstanding range of local amenities.

The apartment features a generous open-plan reception and dining area, designed to maximise natural light through expansive floor-to-ceiling glazing. Contemporary interiors and well-proportioned living spaces create a bright and welcoming environment, perfectly suited to both everyday living and entertaining.

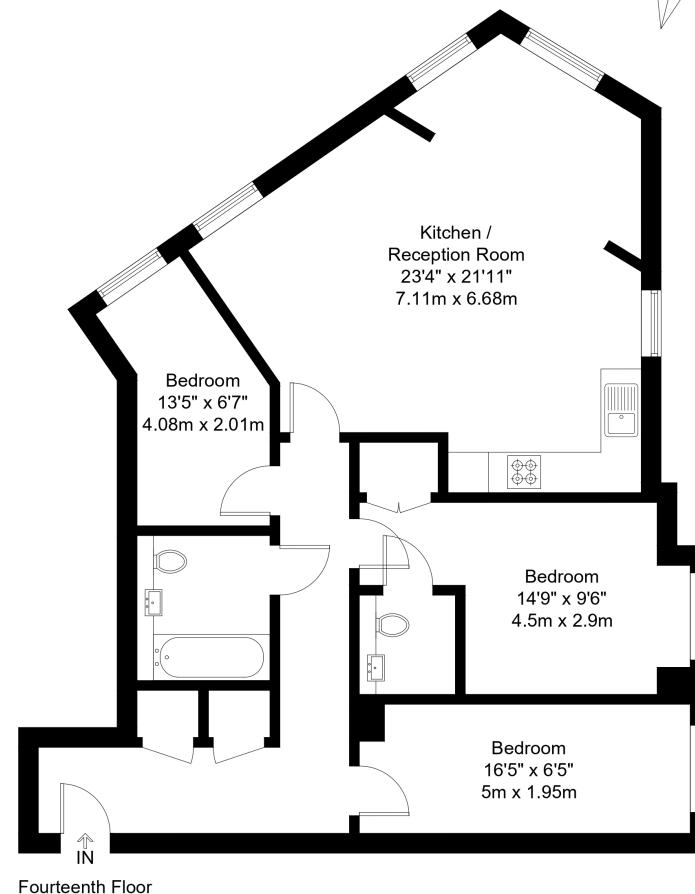
KEY FEATURES

- Shares and students welcome
- Three bedrooms
- Two bathrooms
- 14th floor
- Over 920 sq ft
- Private residents' lounge
- 24-hour concierge
- Roof garden
- Residents' gym

High Street, E15

Approx Gross Internal Area = 85.8 sq m / 924 sq ft

EBI



The Floor plan is not to scale and measurements and areas shown are approximate and therefore should be used for illustrative purposes only. The plan has been prepared in accordance with the RICS code of Measuring Practice and whilst we have confidence in the information produced it must not be relied on. Maximum lengths and widths are represented on the floor plan. If there is any aspect of particular importance, you should carry out or commission your own inspection of the property.
Copyright @ BleuPlan

Energy Performance Certificates

