



Settlers Court, 17 Newport Avenue, E14 2DG

Price:
£ 400,000

Settlers Court, 17 Newport Avenue, E14 2DG

Price: £ 400,000 2 bedroom house

[View Property](#)

OVERVIEW

Positioned on the top floor of a sought-after riverside development, this well-presented two bedroom apartment offers approximately 690 sq ft of bright, well-balanced living space.

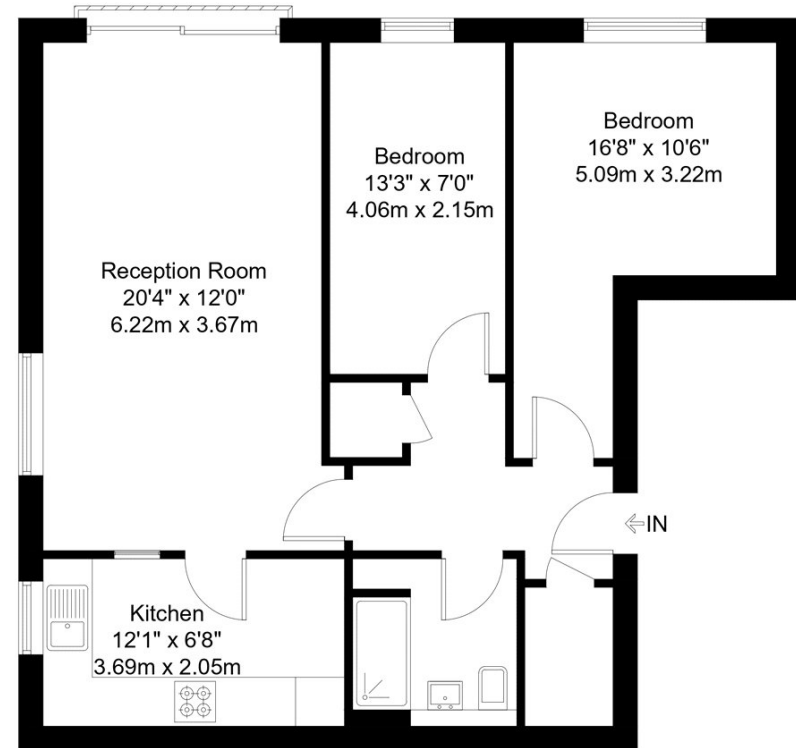
The apartment features a spacious open-plan reception area with a Juliet balcony, creating an excellent sense of light and openness. A separate fitted kitchen is finished with integrated appliances, while the overall layout has been thoughtfully maintained throughout. Both bedrooms are comfortable doubles with built-in wardrobes, complemented by a modern three-piece bathroom suite. Additional storage is provided via two fitted cupboards located in the hallway. The property also benefits from a high-speed fibre connection.

KEY FEATURES

- Top floor two bedroom apartment within a riverside development
- Approximately 737 sq ft of bright, well-proportioned living space
- Spacious open-plan reception with Juliet balcony
- Separate fitted kitchen with integrated appliances
- Two generous double bedrooms with built-in wardrobes
- Modern three-piece bathroom suite and ample hallway storage
- High-speed fibre broadband and 24-hour concierge service
- Moments from East India DLR and close to Canary Wharf

Newport Avenue, E14

Approx Gross Internal Area = 64.1 sq m / 690 sq ft



Fifth Floor

The Floor plan is not to scale and measurements and areas shown are approximate and therefore should be used for illustrative purposes only. The plan has been prepared in accordance with the RICS code of Measuring Practice and whilst we have confidence in the information produced it must not be relied on. Maximum lengths and widths are represented on the floor plan. If there is any aspect of particular importance, you should carry out or commission your own inspection of the property.
Copyright © BleuPlan

Energy Performance Certificates

