



Saltwell Street, E14 0DY

Price:

£ 575,000

Saltwell Street, E14 0DY

Price: £ 575,000 3 bedroom house

[View Property](#)

OVERVIEW

Rare to market, this remarkable 3-bedroom freehold family home, located in a Quiet cul-de-sac. Situated very close to local primary schools and colleges, boasting Mayflower Primary, one of the top rated state schools in the country (according to the Sunday Times best school list) a short walk away.

Well orientated offering a South facing back garden paired with a front garden offering a herb and rose garden with a fully grown established bay tree. As you enter, you will be greeted by a spacious and inviting hall that leads to the open-plan living area. The well-appointed kitchen boasts sleek Granite countertops, ample storage space, and top-of-the-line built in appliances, making it a culinary enthusiast's dream.

KEY FEATURES

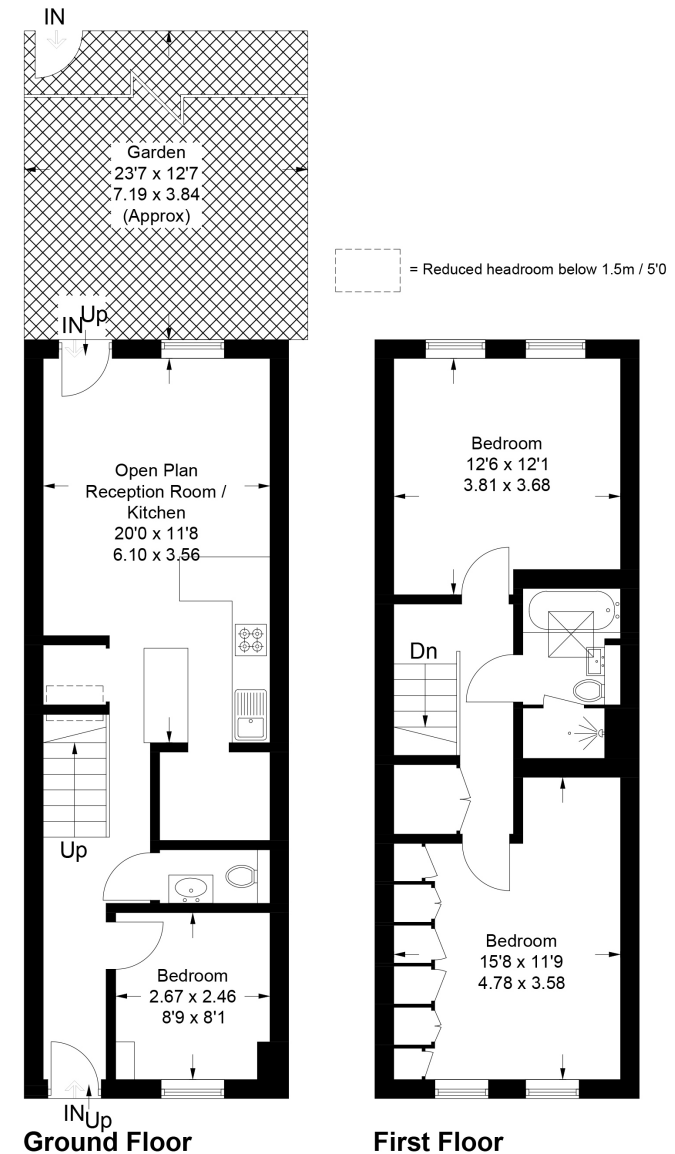
- Freehold house
- Rare to market
- South facing garden
- New insulated roof
- Quiet cul-de-sac
- Idyllic location
- Close to a plethora of shops
- 0.3 miles to Poplar DLR station
- 0.7 miles to Canary Wharf Jubilee line
- Viewings welcome

Saltwell Street, E14

Approximate Gross Internal Area = 82.7 sq m / 890 sq ft



ERNEST-BROOKS
INTERNATIONAL



Property of Ernest Brooks International

This plan is for layout guidance only. Not drawn to scale unless stated. Windows and door openings are approximate. Whilst every care is taken in the preparation of this plan, please check all dimensions, shapes and compass bearings before making any decisions reliant upon them. (ID1035279)

