



EBI

Rosewood Building, Gorsuch Place, E2 8HU

Price:
£ 3,200 /pcm

Rosewood Building, Gorsuch Place, E2 8HU

Price: £ 3,200 /pcm2 bedroom house

[View Property](#)

OVERVIEW

Elegant Two-Bedroom Furnished Apartment – Shoreditch Exchange, London

Located in highly sought-after Shoreditch Exchange development, this exceptional two-bedroom apartment offers 787 sqft of thoughtfully designed living space, including the generous private balcony.

KEY FEATURES

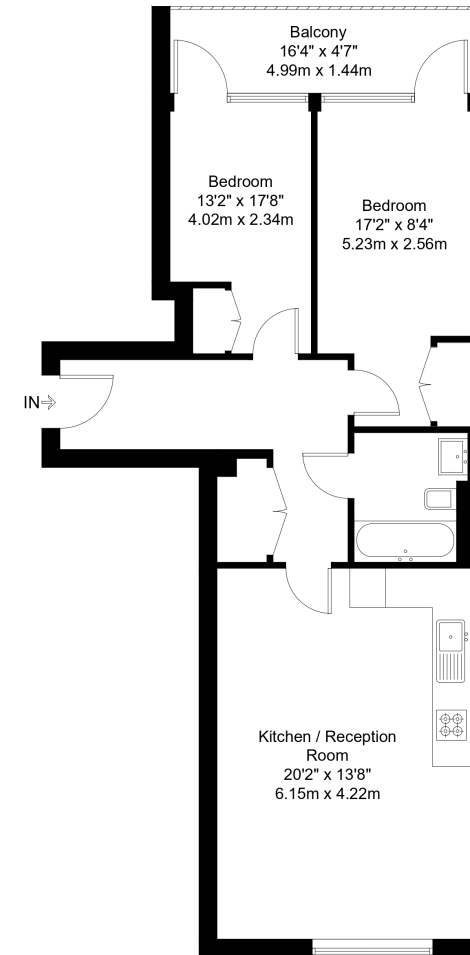
- Two bedroom
- Furnished
- Private balcony
- Landscaped roof terrace
- Cinema room
- Residents' fitness suite & club lounge
- 24-hour concierge service
- Moments away from Hoxton and Old Street Stations

Gorsuch Place, E2

Approx Gross Internal Area = 65.22 sq m / 702 sq ft

Balcony = 7.19 sq m / 77 sq ft

Total = 72.41 sq m / 779 sq ft



Second Floor

The Floor plan is not to scale and measurements and areas shown are approximate and therefore should be used for illustrative purposes only. The plan has been prepared in accordance with the RICS code of Measuring Practice and whilst we have confidence in the information produced it must not be relied on. Maximum lengths and widths are represented on the floor plan. If there is any aspect of particular importance, you should carry out or commission your own inspection of the property.

Copyright @ BleuPlan

