



E·B·I

Rendel House, 20 Goodluck Hope Walk, E14 0XG

Price:
£ 600,000

Rendel House, 20 Goodluck Hope Walk, E14 0XG

Price: £ 600,000 2 bedroom house

[View Property](#)

OVERVIEW

A beautifully presented two bedroom, two bathroom apartment with private balcony offering tranquil garden and water views, set within the highly sought-after Goodluck Hope development by Ballymore.

Positioned on the historic Leamouth Peninsula, directly on the banks of the River Thames, Goodluck Hope is one of East London's most exciting riverside neighbourhoods, comprising over 800 homes surrounded by water on three sides and located adjacent to London City Island.

KEY FEATURES

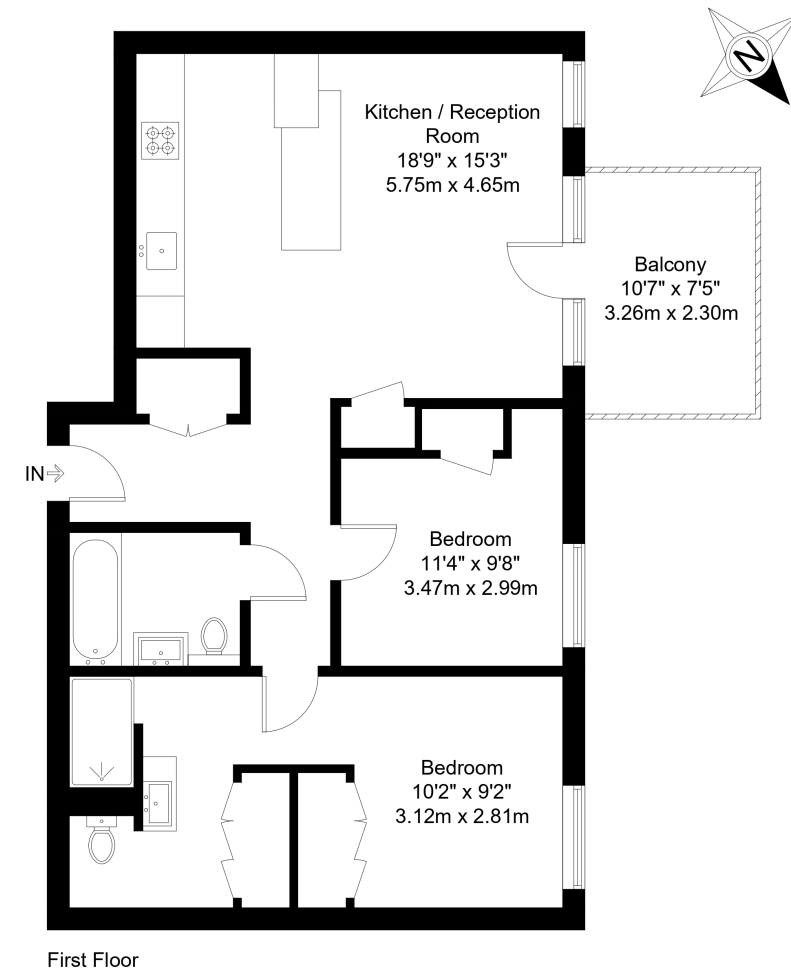
- Stunning two bedroom, two bathroom apartment
- Private balcony with garden and water views
- Located within Ballymore's prestigious Goodluck Hope development
- Positioned directly on the River Thames at Leamouth Peninsula
- High specification finish throughout
- Access to premium resident facilities and landscaped communal areas
- Excellent connectivity via Thames Clipper, DLR and Jubilee Line links
- Canary Wharf accessible in approximately 17 minutes by river service

Goodluck Hope Walk, E14

Approx Gross Internal Area = 72.11 sq m / 776 sq ft

Balcony = 7.5 sq m / 81 sq ft

Total = 79.61 sq m / 857 sq ft



The Floor plan is not to scale and measurements and areas shown are approximate and therefore should be used for illustrative purposes only. The plan has been prepared in accordance with the RICS code of Measuring Practice and whilst we have confidence in the information produced it must not be relied on. Maximum lengths and widths are represented on the floor plan. If there is any aspect of particular importance, you should carry out or commission your own inspection of the property.
Copyright @ BleuPlan

Energy Performance Certificates

