

ERNEST-BROOKS  
INTERNATIONAL

**Rainier Apartments, 43 Cherry Orchard Road, CR0 6FD**

Price:  
£ 350,000





# Rainier Apartments, 43 Cherry Orchard Road, CR0 6FD

Price: £ 350,000 2 bedroom house

[View Property](#)

## OVERVIEW

Positioned on a high floor within the sought-after Rainier Apartments, this spacious two-bedroom, two-bathroom residence offers contemporary living in the heart of Croydon. Beautifully presented and finished to a high standard throughout, the apartment benefits from full-height dual-aspect glazing that floods the interiors with natural light and opens onto a generous private balcony with far-reaching skyline views.

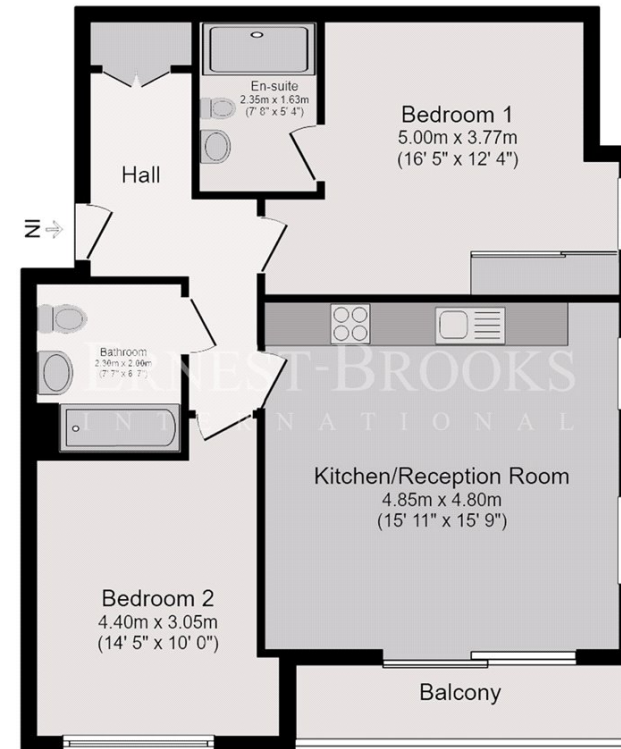
The interior has been thoughtfully designed to combine style and functionality, featuring a sleek contemporary kitchen with integrated appliances, elegantly appointed bathrooms, and comfort cooling for year-round climate control. Clean lines, quality materials, and well-considered detailing create a modern and comfortable living environment.

## KEY FEATURES

- Fully furnished to a high standard with modern, well-coordinated interiors
- Spacious two-bedroom, two-bathroom layout designed for comfort and functionality
- Approximately 750 sq ft of well-proportioned internal living space
- Access to residents' gym, concierge service, and secure entry system
- Prime location moments from East Croydon Station with excellent connectivity
- Contemporary interiors with full-height glazing and excellent natural light
- Generous open-plan kitchen and living area ideal for everyday living
- Large private balcony offering panoramic skyline views and outdoor space
- Close to shops, restaurants, and a wide range of local amenities

# Rainier Apartments

ERNEST-BROOKS  
INTERNATIONAL



## Eleventh Floor Plan

Total Floor area 70.2 sq.m. ( 756 sq.ft.) approx

Whilst every attempt has been made to ensure the accuracy of the floor plan contained here, measurements of doors, windows, rooms and any other items are approximated and no responsibility is taken for any error, omission or mis-statement. This plan is for illustrative purposes only and should be used as such by prospective purchaser. The service, system and appliances shown have not been tested and no guarantee as to their operability or efficiency can be given.

Energy Performance Certificates

