



Rainier Apartments, 43 Cherry Orchard Road, CR0 6FD

Price:
£ 350,000

Rainier Apartments, 43 Cherry Orchard Road, CR0 6FD

Price: £ 350,000 2 bedroom house

[View Property](#)

OVERVIEW

Positioned on a high floor within the sought-after Rainier Apartments, this spacious two-bedroom, two-bathroom residence offers exceptional living in the heart of Croydon. Beautifully presented and finished to an excellent standard throughout, the apartment features full-height dual-aspect windows that flood the space with natural light and open onto a large private balcony showcasing far-reaching skyline views.

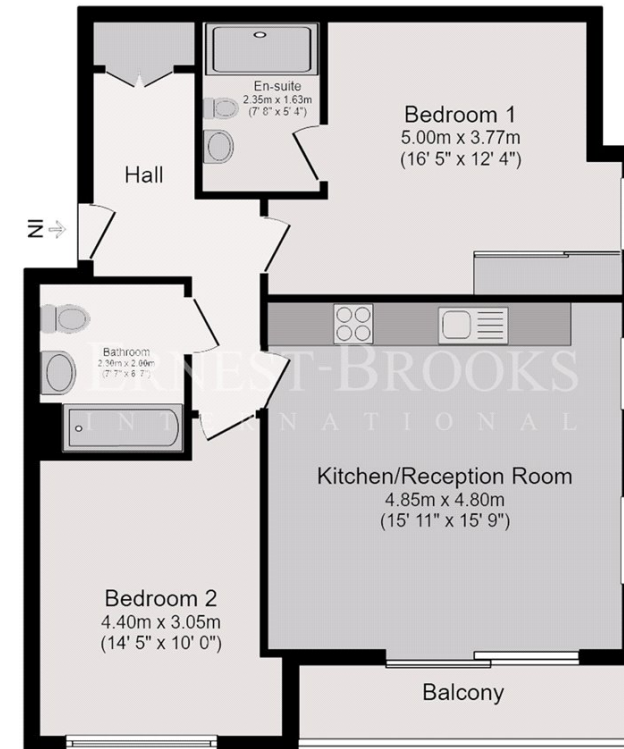
The interior has been thoughtfully designed with premium fixtures and fittings, including a sleek contemporary kitchen, stylish bathrooms, and comfort cooling throughout for year-round climate control.

KEY FEATURES

- Fully furnished to a high standard
- Spacious two-bedroom, two-bathroom layout
- Approx. 750 sq ft of internal living space
- Access to residents' gym and concierge services
- Prime location adjacent to East Croydon Station
- Contemporary interiors with excellent natural light
- Generous open-plan kitchen and living area
- Large private balcony with panoramic skyline views
- Close proximity to shops, restaurants, and key transport links

Rainier Apartments

ERNEST-BROOKS
INTERNATIONAL



Eleventh Floor Plan

Total Floor area 70.2 sq.m. (756 sq.ft.) approx

Whilst every attempt has been made to ensure the accuracy of the floor plan contained here, measurements of doors, windows, rooms and any other items are approximated and no responsibility is taken for any error, omission or mis-statement. This plan is for illustrative purposes only and should be used as such by prospective purchaser. The service, system and appliances shown have not been tested and no guarantee as to their operability or efficiency can be given.

Energy Performance Certificates

