

Rainier Apartments, 43 Cherry Orchard Road, CR0 6FA

Price:
£ 435,000

Rainier Apartments, 43 Cherry Orchard Road, CR0 6FA

Price: £ 435,000 3 bedroom house

[View Property](#)

OVERVIEW

Discover contemporary city living in this spacious three-bedroom apartment, set on the 6th floor of the popular Rainier Apartments, just moments from East Croydon Station. Offering approximately 967 sq ft of well-designed internal space, this home combines comfort, practicality and excellent connectivity.

The apartment opens into a bright and airy open-plan living and dining area, seamlessly flowing into a modern fitted kitchen. This space is ideal for both everyday living and entertaining, with large windows allowing plenty of natural light throughout. The living area leads out to a private balcony, providing an excellent spot to relax and enjoy elevated views across the surrounding area.

KEY FEATURES

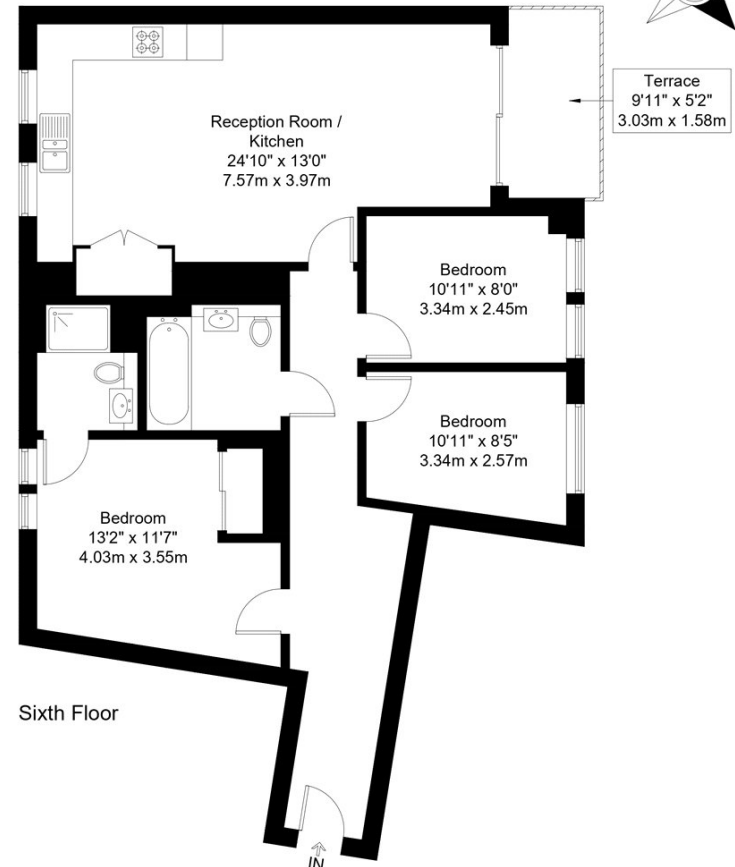
- Spacious three bedroom apartment arranged on the 6th floor
- Approximately 967 sq ft of well-proportioned internal accommodation
- Bright open plan living and dining area with modern fitted kitchen
- Private balcony offering elevated views and excellent natural light
- Principal bedroom with contemporary en suite bathroom
- Two further generously sized bedrooms ideal for family or home working
- Modern family bathroom with quality fixtures and finishes
- Moments from East Croydon Station with fast links into Central London

Cherry Orchard Road, CR0

Approx Gross Internal Area = 84.5 sq m / 910 sq ft

Terrace = 4.8 sq m / 52 sq ft

Total = 89.3 sq m / 962 sq ft



The Floor plan is not to scale and measurements and areas shown are approximate and therefore should be used for illustrative purposes only. The plan has been prepared in accordance with the RICS code of Measuring Practice and whilst we have confidence in the information produced it must not be relied on. Maximum lengths and widths are represented on the floor plan. If there is any aspect of particular importance, you should carry out or commission your own inspection of the property.
Copyright © BleuPlan

Energy Performance Certificates

