



Principal Tower, 2 Principal Place, Worship Street, EC2A 2FD

Price:

£ 4,400 /pcm

Principal Tower, 2 Principal Place, Worship Street, EC2A 2FD

Price: £ 4,400 /pcm2 bedroom house

[View Property](#)

OVERVIEW

Available April is this luxury South East facing apartment spread over (879 Sq. Ft) & located on the 10th floor of Principal Tower with a private terrace (57 sq ft).

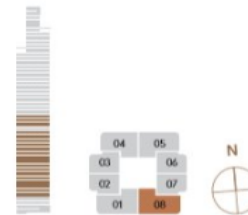
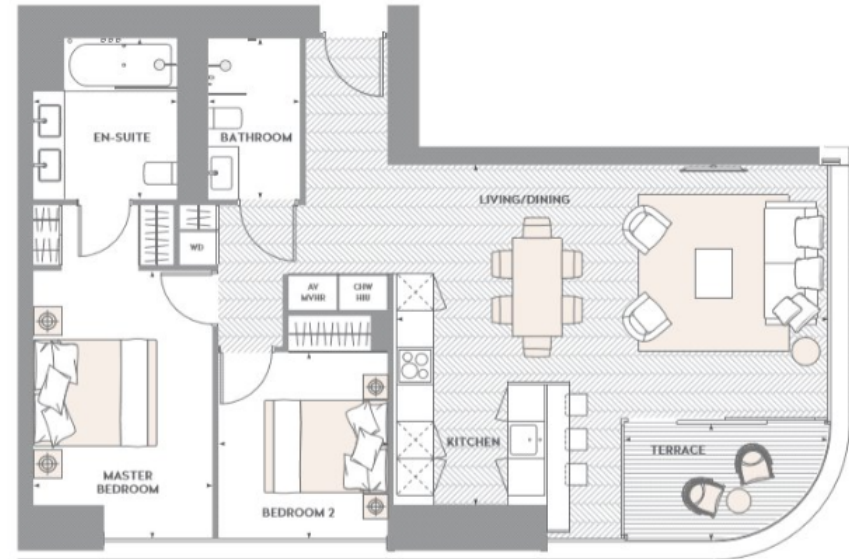
Each of the luxurious apartments in this 50-storey tower also benefits from the residents' gym and spa, screening room, lap pool, 24-hour concierge and the newly built adjacent tree-lined piazza of shops, restaurants and bars. With a City address, but within walking distance of trend-setting Shoreditch, the development offers fast, efficient transport links, as well as a wealth of cultural and culinary experiences on the doorstep. The luxury interiors are designed by Foster + Partners' LIV Interiors a truly outstanding finish.

KEY FEATURES

- Available April
- Two bedroom
- 879sqft + 57sqft balcony
- South/east facing
- Sauna, jacuzzi, steam room & residents gymnasium
- 24 hour concierge service & private screening Room
- Furnished to a high standard
- Walking distance to Liverpool Street Station

2 BEDROOM
FLOORS 04-19, 21-23

| | | | |
|-----------|--|-----------------------|------------------------------|
| APARTMENT | 817m ² / 879ft ² | Living/dining/kitchen | 7.00 x 5.52m / 23'0" x 18'0" |
| TERRACE | 5.3m ² / 57ft ² | Master Bedroom | 2.90 x 4.35m / 9'6" x 14'3" |
| | | En-suite | 2.33 x 2.61m / 7'7" x 8'7" |
| | | Bedroom 2 | 2.75 x 3.02m / 9'0" x 9'11" |
| | | Bathroom | 1.49 x 2.58m / 4'11" x 8'5" |
| | | Terrace | 3.28 x 1.88m / 10'9" x 6'2" |



Energy Performance Certificates

| Energy Efficiency Rating | | |
|---|---------|-----------|
| | Current | Potential |
| Very energy efficient - lower running costs | | |
| (92+) A | | |

