



Principal Tower, 2 Principal Place, EC2A 2FF

Price:

£ 1,250,000

Principal Tower, 2 Principal Place, EC2A 2FF

Price: £ 1,250,000 2 bedroom house

[View Property](#)

OVERVIEW

A beautifully furnished apartment on the 30th floor, offering over 770 sq ft of refined living space and a 55 sq ft private terrace. Set within the prestigious Principal Tower, this home sits near London’s most iconic landmarks - The Gherkin, Walkie-Talkie, Tower 42, and the Cheesegrater - and is a striking landmark in its own right.

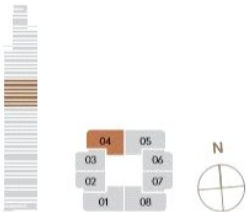
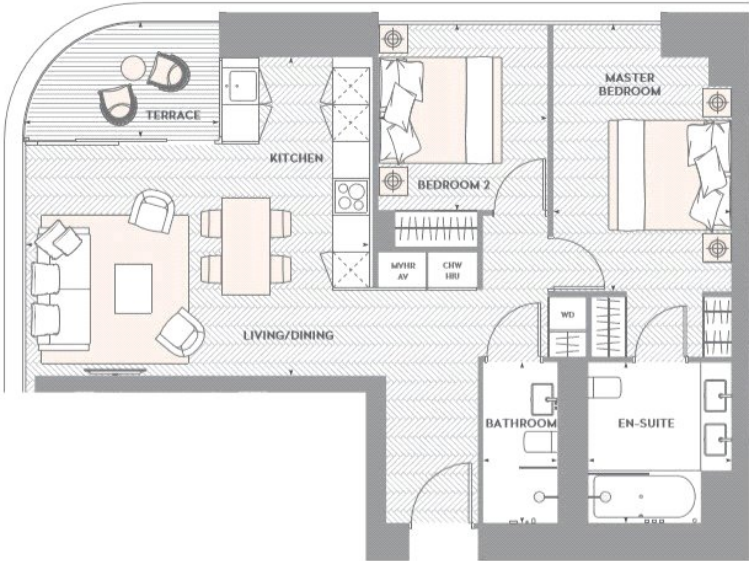
Designed inside and out by Foster + Partners, Principal Tower embodies the energy of its prime position between Shoreditch and The City. The nearby Principal Place plaza adds to the appeal with boutiques, cafés, bars, and restaurants creating a lively atmosphere.

KEY FEATURES

- 30th floor location
- 770 sq ft plus 55 sq ft private balcony
- Exclusive residentsu2019 gym and screening room
- Includes sauna, jacuzzi, and steam room
- 24-hour concierge service
- Designed by Foster + Partners
- Furnished to an exceptional standard
- Surrounded by a wide range of shops and local amenities

2 BEDROOM
FLOORS 24-30

APARTMENT	715m ² / 770ft ²	Living/dining/kitchen	5.60 x 5.98m / 18'4" x 16'11"
TERRACE	5.2m ² / 55ft ²	Master Bedroom	2.90 x 4.35m / 9'6" x 14'3"
		En-suite	2.33 x 2.61m / 7'7" x 8'6"
		Bedroom 2	2.75 x 3.2m / 9'0" x 10'5"
		Bathroom	1.21 x 2.58m / 3'12" x 8'6"
		Terrace	3.18 x 1.88m / 10'5" x 6'2"



Energy Performance Certificates

Score	Energy rating	Current	Potential
92+	A		
81-91	B	85 B	85 B
69-80	C		

