



Poseidon Court, Homer Drive, E14 3UG

Price:
£ 1,200,000

Poseidon Court, Homer Drive, E14 3UG

Price: £ 1,200,000 3 bedroom house

[View Property](#)

OVERVIEW

This exquisite penthouse apartment offers river side luxury with three double bedrooms and two private terraces both offering far reaching views of the stunning Canary Wharf skyline and the River Thames.

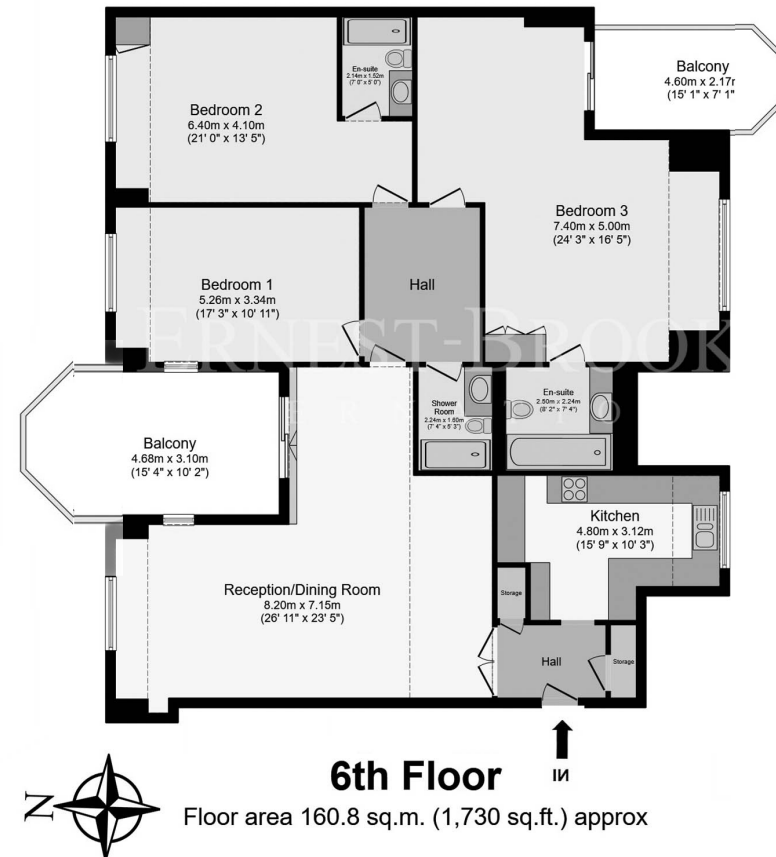
With nearly 2000sqft of living space, this superb home has a stylish finish throughout and offers three double bedrooms with two sleek modern ensuites. The huge master bedroom is complimented with room for a walk in wardrobe/dressing area and a sliding door leading to large roof terrace. The ensuite bathroom also offers a jacuzzi bathtub.

KEY FEATURES

- Superb 3 bedroom penthouse apartment
- Nearly 2000sqft
- Three double bedrooms
- Three bathrooms
- Two roof terraces
- Massive reception room
- Double vaulted ceilings
- Bespoke fully fitted kitchen
- Stylish finish throughout
- Two underground parking spaces
- Share of Freehold
- Chain free

Poseidon Court

ERNEST-BROOKS
INTERNATIONAL



Whilst every attempt has been made to ensure the accuracy of the floor plan contained here, measurements of doors, windows, rooms and any other items are approximated and no responsibility is taken for any error, omission or mis-statement. This plan is for illustrative purposes only and should be used as such by prospective purchaser. The service, system and appliances shown have not been tested and no guarantee as to their operability or efficiency can be given.

