



## Phoenix Lodge Mansions, Brook Green, W6 7BG

Price:

£ 1,199,000





# Phoenix Lodge Mansions, Brook Green, W6 7BG

Price: £ 1,199,000 3 bedroom house

[View Property](#)

## OVERVIEW

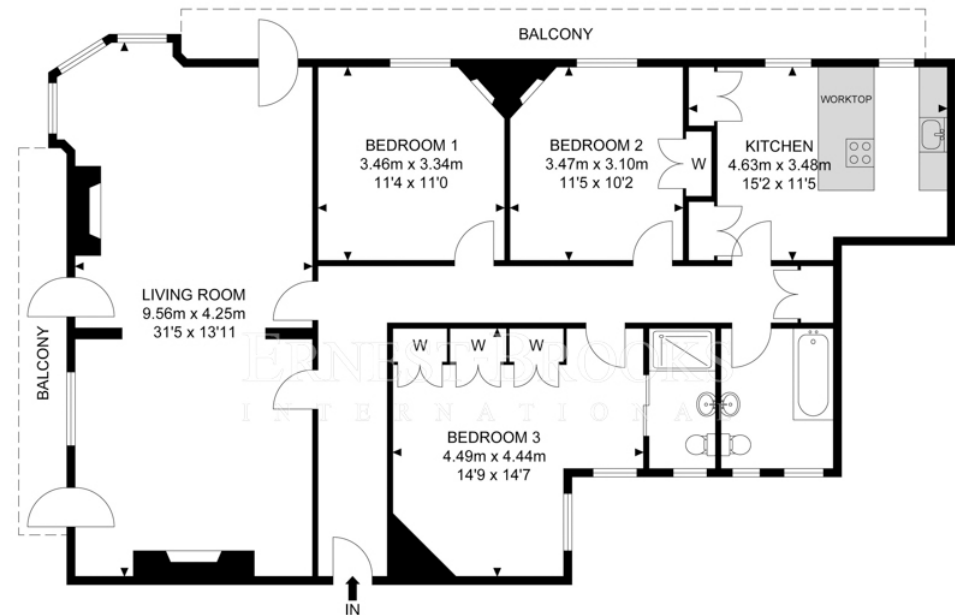
\*Just Added - Rare To Market\* Elegance and sophistication are epitomised in this large, spacious and bright top-floor apartment overlooking Brook Green, located in Phoenix Lodge Mansions, W6

Beautifully presented, this three-bed, two-bathroom apartment is situated on the corner of a typically picturesque and highly desirable mansion block and boasts the high ceilings you've come to expect from this style of build.

## KEY FEATURES

- Shae Of Feehold
- Thee Double Bedooms
- Two Reception Rooms
- Top Floo
- High Ceilings
- Two Pivate Balconies
- Open Plan Reception Aea
- Communal Gaden
- Secue Off Steet Paking
- Close To Local Amenities
- OPEN 7 DAYS A WEEK

## Phoenix Lodge



3rd Floor



APPROX. GROSS INTERNAL FLOOR AREA 1311.04 SQ FT / 121.80 SQM  
APPROX. GROSS EXTERNAL FLOOR AREA 191.59 SQ FT / 17.80 SQM

Whilst every attempt has been made to ensure the accuracy of the floor plan contained here, measurements of doors, windows, rooms and any other items are approximated and no responsibility is taken for any error, omission or mis-statement. This plan is for illustrative purposes only and should be used as such by any prospective purchaser. The service, system and appliances shown have not been tested and no guarantee as to their operability or efficiency can be given.

© SpacePhoto

Photography and Floor Plan

Energy Performance Certificates



