

ERNEST-BROOKS  
INTERIOR DESIGN**Petticoat Tower, Aldgate, E1 7EE**

Price:  
£ 425,000





# Petticoat Tower, Aldgate, E1 7EE

Price: £ 425,000 2 bedroom house

[View Property](#)

## OVERVIEW

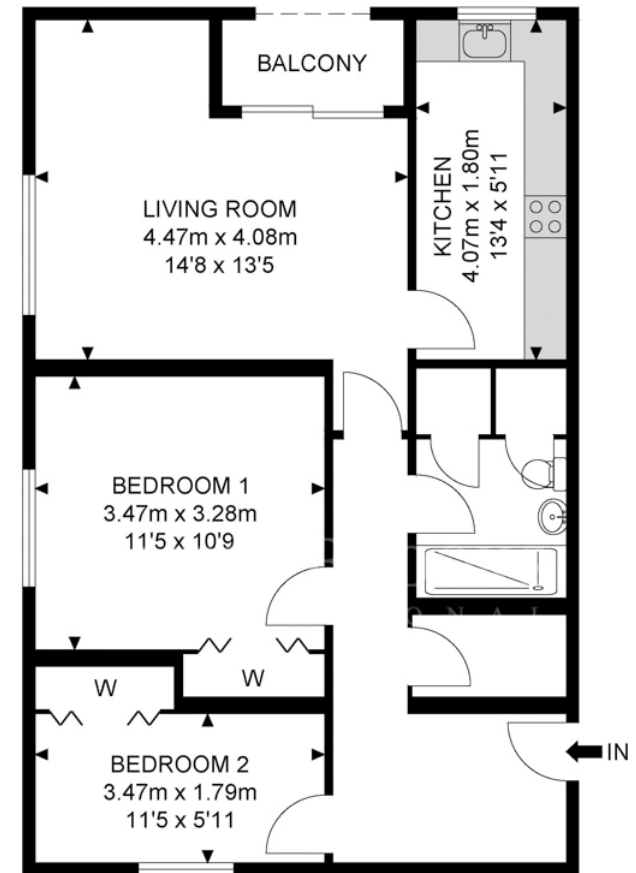
Located in the heart of the City is this purpose built two bedroom tenth floor apartment.

Situated in the historical area of petticoat lane, within the district of Shoreditch featuring some of the City's most famous restaurants, bars and cafes, art galleries and the culture of the East end of London prevail.

## KEY FEATURES

- Two Double Bedooms
- Tenth Floo
- Chain Fee
- Access to Tanspot
- Close To All Amenities
- Ideal Investment
- Balcony
- Fitted Bathoom
- City Location
- Easy Walk To Liverpool Steet o Mogate Tain Stations

## Petticoat Tower



10th Floor



APPROX. GROSS INTERNAL FLOOR AREA 661.98 SQ FT / 61.50 SQM

APPROX. GROSS EXTERNAL FLOOR AREA 23.68 SQ FT / 2.20 SQM

Whilst every attempt has been made to ensure the accuracy of the floor plan contained here, measurements of doors, windows, rooms and any other items are approximated and no responsibility is taken for any error, omission or mis-statement. This plan is for illustrative purposes only and should be used as such by any prospective purchaser. The service, system and appliances shown have not been tested and no guarantee as to their operability or efficiency can be given.

© SpacePhoto

Photography and Floor Plan

**Energy Performance Certificates**



