



Pan Peninsula, West Tower, 1 Pan Peninsula Square, E14 9HA

Price:

£ 435,000

Pan Peninsula, West Tower, 1 Pan Peninsula Square, E14 9HA

Price: £ 435,000 1 bedroom house

[View Property](#)

OVERVIEW

A large and well-presented one-bedroom apartment located on the 5th floor of the prestigious West Tower at Pan Peninsula. This bright and airy home features a dual-aspect living area with full-height windows, providing an abundance of natural light and access to a private balcony. The open-plan kitchen is fully equipped and finished to a high standard, complemented by wood flooring and recessed lighting throughout.

The double bedroom benefits from integrated wardrobes, and the bathroom is elegantly styled with marble finishes.

KEY FEATURES

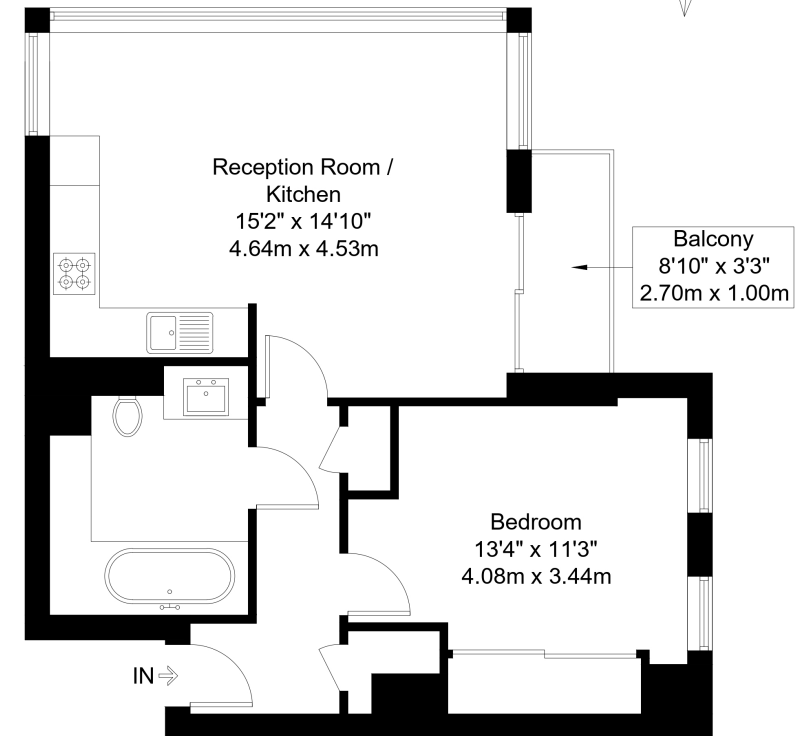
- Spacious one-bedroom apartment located on the 5th floor of the West Tower
- Bright dual-aspect living room with full-height windows and private balcony
- Contemporary open-plan kitchen with integrated appliances
- Stylish bathroom featuring high-end marble finishes
- Wood flooring and recessed lighting throughout
- Double bedroom with built-in wardrobes
- Residents benefit from 24-hour concierge, gym, pool, cinema, and business centre
- Prime location just 4 minutes from South Quay DLR and a short walk to Canary Wharf, Jubilee Line, and Elizabeth Line stations

Pan Peninsula Square, E14

Approx Gross Internal Area = 52.54 sq m / 566 sq ft

Balcony = 2.69 sq m / 29 sqft

Total = 55.23 sq m / 595 sq ft



Fifth Floor

The Floor plan is not to scale and measurements and areas shown are approximate and therefore should be used for illustrative purposes only. The plan has been prepared in accordance with the RICS code of Measuring Practice and whilst we have confidence in the information produced it must not be relied on. Maximum lengths and widths are represented on the floor plan. If there is any aspect of particular importance, you should carry out or commission your own inspection of the property.
Copyright © BleuPlan

Energy Performance Certificates

