



Paisley Court, 15 Clyde Square, E14 7TB

Price:
£ 425,000

Paisley Court, 15 Clyde Square, E14 7TB

Price: £ 425,000 2 bedroom house

[View Property](#)

OVERVIEW

Set within the popular Paisley Court development in Limehouse, this well-presented two-bedroom, two-bathroom ground floor apartment at 15 Clyde Square, E14, offers practical contemporary living in a highly convenient East London location. Spanning approximately 575 sq ft, the property combines a well-balanced layout, allocated parking, and excellent transport connectivity, making it an ideal purchase for professionals, first-time buyers, or investors.

The apartment features a bright open-plan living and dining area, thoughtfully designed to maximise space and functionality. Large windows allow natural light to flow throughout the property, creating a comfortable and welcoming atmosphere for everyday living. The adjoining kitchen is fitted with modern cabinetry and integrated appliances, offering both practicality and contemporary styling.

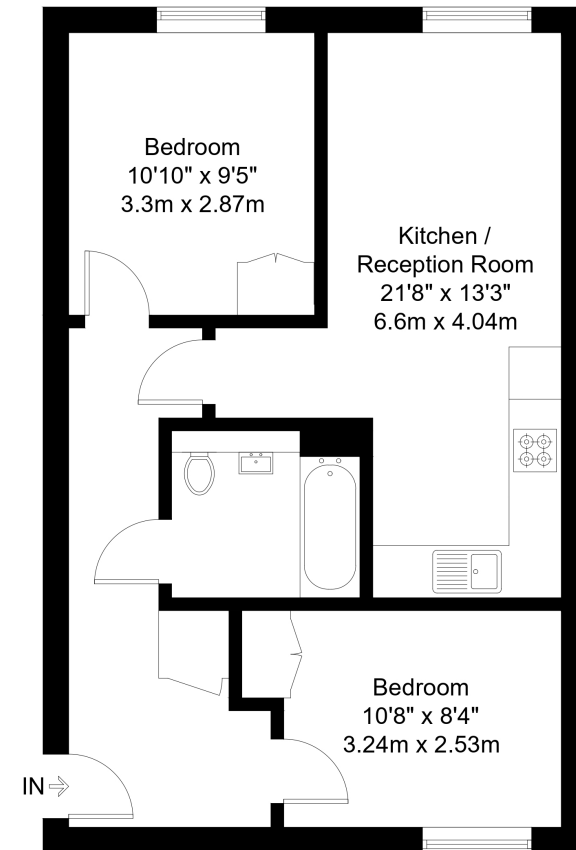
KEY FEATURES

- Two-bedroom two-bathroom apartment
- Ground floor modern residence
- Approx. 575 sq ft internal space
- Allocated parking space included
- Popular Limehouse development
- Bright open-plan living area
- Modern fitted kitchen
- Excellent DLR and City access
- Close to Canary Wharf
- Strong rental and lifestyle appeal

Paisley Court, E14

Approx Gross Internal Area = 53.4 sq m / 575 sq ft

EBI



Lower Ground Floor

The Floor plan is not to scale and measurements and areas shown are approximate and therefore should be used for illustrative purposes only. The plan has been prepared in accordance with the RICS code of Measuring Practice and whilst we have confidence in the information produced it must not be relied on. Maximum lengths and widths are represented on the floor plan. If there is any aspect of particular importance, you should carry out or commission your own inspection of the property.
Copyright @ BleuPlan

Energy Performance Certificates

