



Packington Square, Islington, N1 7FW

Price:
£ 3,915 /pcm

Packington Square, Islington, N1 7FW

Price: £ 3,915 /pcm2 bedroom house

[View Property](#)

OVERVIEW

Spacious two bedroom apartment with private garden terrace in Islington. Set within the award-winning Packington Square development, this stylish two-bedroom, two-bathroom apartment spans over 1,000 sq ft and includes a rare private garden. The open-plan layout is perfect for modern living, combining generous space with sleek, contemporary finishes throughout.

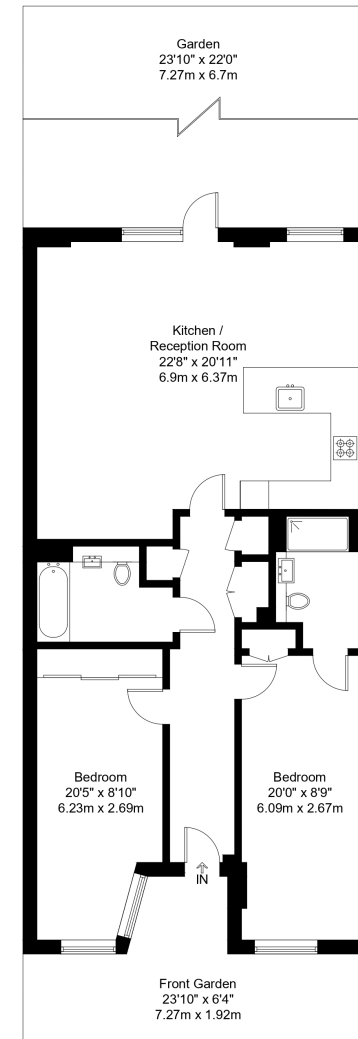
Located in the heart of Islington, moments from Upper Street, Shoreditch Park and the canals of City Road Basin, this property offers both tranquillity and prime connectivity. A perfect blend of indoor comfort and outdoor space in one of London's most sought-after neighbourhoods.

KEY FEATURES

- Two double bedrooms
- Two modern bathrooms
- Huge flat over 1,000 sqft
- Open-plan living space
- Integrated kitchen
- Large private garden
- Lift and secure entry
- Moments from Upper Street
- Close to Angel & Old Street stations
- Near Shoreditch Park & City Road Basin

Packington Square, N1

Approx Gross Internal Area = 97.4 sq m / 1048 sq ft



Ground Floor

The Floor plan is not to scale and measurements and areas shown are approximate and therefore should be used for illustrative purposes only. The plan has been prepared in accordance with the RICS code of Measuring Practice and whilst we have confidence in the information produced it must not be relied on. Maximum lengths and widths are represented on the floor plan. If there is any aspect of particular importance, you should carry out or commission your own inspection of the property.
Copyright © BleuPlan

